

NOTES:

1. MATERIAL:

HOUSING: THERMOPLASTIC, HIGH TEMP, UL94V-0, BLACK COLOR,
CONTACTS: COPPER ALLOY.
PEGS: COPPER ALLOY.

2. FINISH:

CONTACTS: SELECTED GOLD PLATING ON THE CONTACT AREA,
1u" MIN. GOLD PLATING ON THE SOLDER TAILS,
50 u" MIN. NICKEL UNDERPLATING OVER ALL.
PEGS: 120u" MIN. MATTE-TIN OVER 50u" MIN. NICKEL.

3. PACKAGING SPECIFICATION: 9130404001

4. PRODUCT SPECIFICATION: PS-MINI PCI-E-01

5. DATE CODE.

YYWWDD

YY: YEAR (19: 2019)

WW: WEEK (25: THE 25TH WEEK)

DD: (D1~D7: SUNDAY~SATURDAY)

PRODUCT NUMBER CODE

AF007 80 052 R X XX

80: 8.0H HEIGHT

52 CONTACTS

PACKING OPTIONS
R: TAPE & REEL

HALOGEN OPTIONS
BLANK: HALOGEN
HF: HALOGEN FREE

CONTACT AREA PLATING
0: 30u" GOLD
1: 10u" GOLD
2: GOLD FLASH

				TOLERANCE				TITLE: MINI PCI EXPRESS 8.0MM HEIGHT					
				LINEAR	ANGLES			PART NO. AF00780052XXX					
				X.±0.40	X'±			DWG NO. 80052XXX					
				.X±0.30	.X'±	APPD: Jason	MAT'L:						
0	-----	Lei Songping	Jun,06,2019	.XX±0.20	.XX'±	CHKD: Schumi	FINISH:			UNITS	SCALE	SHEET	REV
REV	ECN NO.	NAME	DATE	.XXX±0.15	.XXX'±	DRWN: Lei Songping	Q'TY:			MM	1 : 1	2 OF 5	0

1

2

3

4

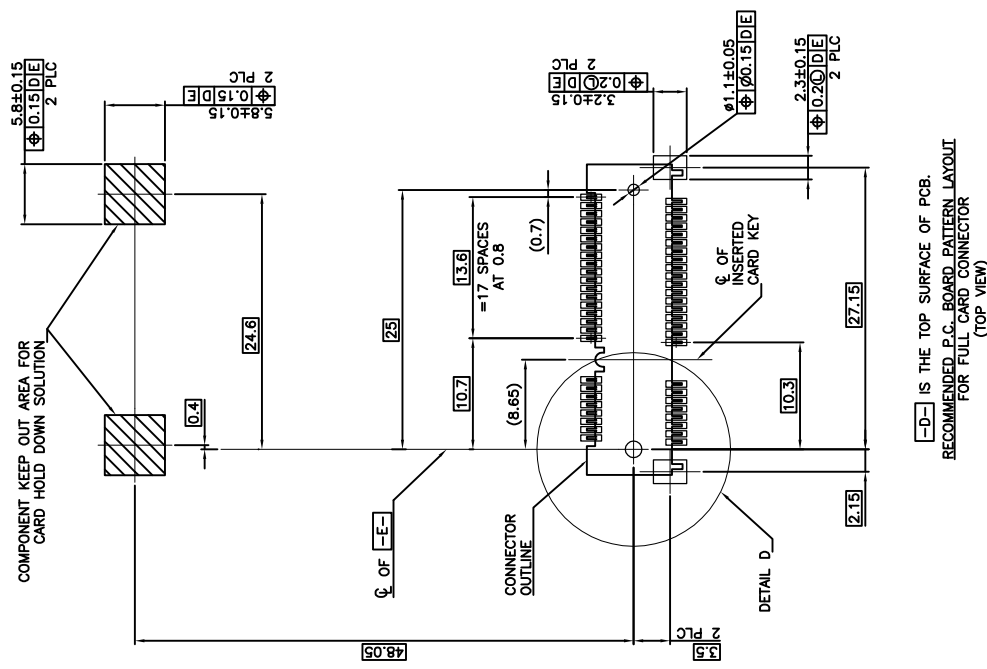
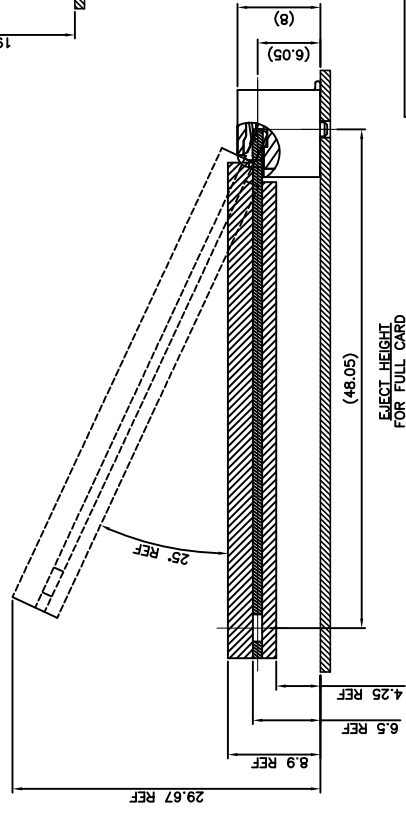
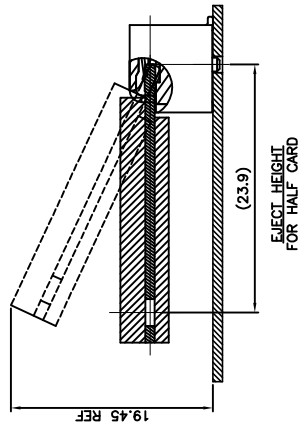
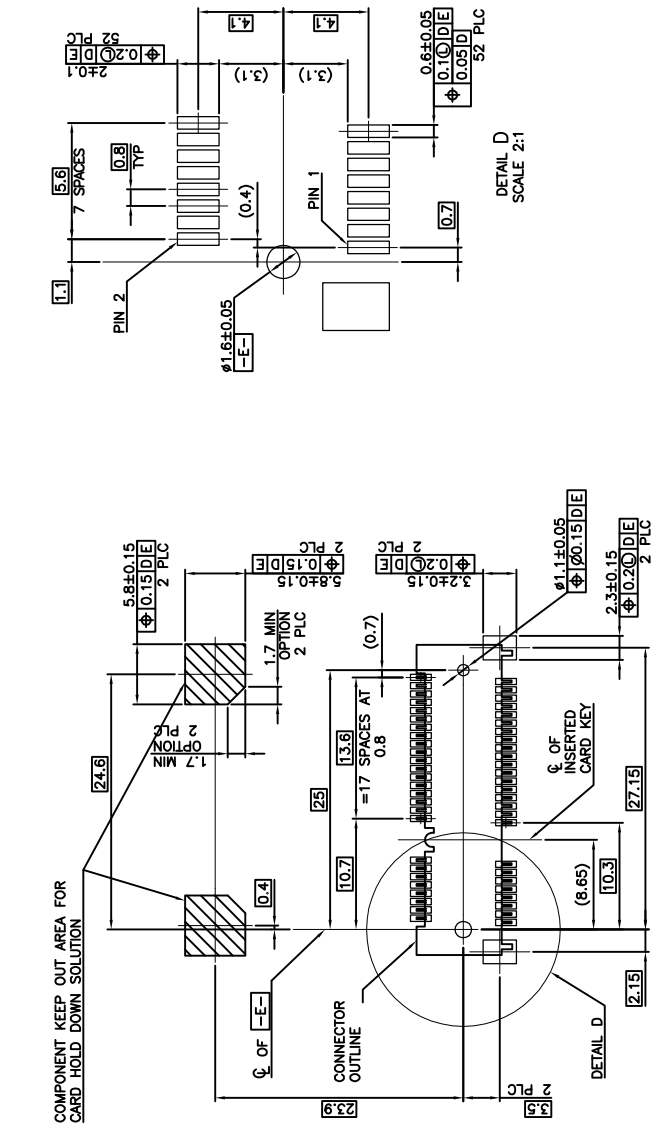
5

6

7

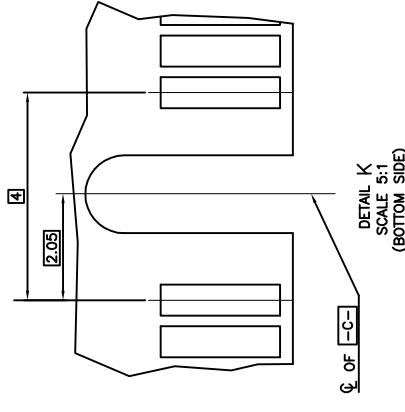
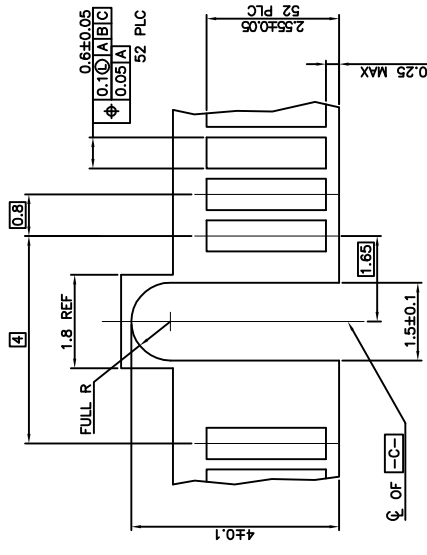
8

CUSTOMER



[-D-] IS THE TOP SURFACE OF PCB.
RECOMMENDED P.C. BOARD PATTERN LAYOUT
FOR FULL CARD CONNECTOR
(TOP VIEW)

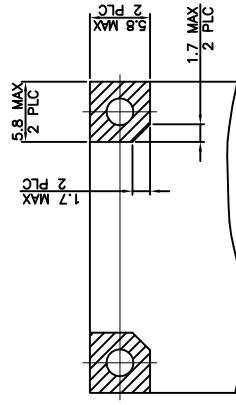
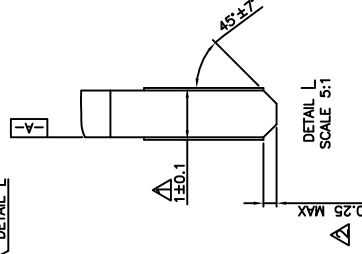
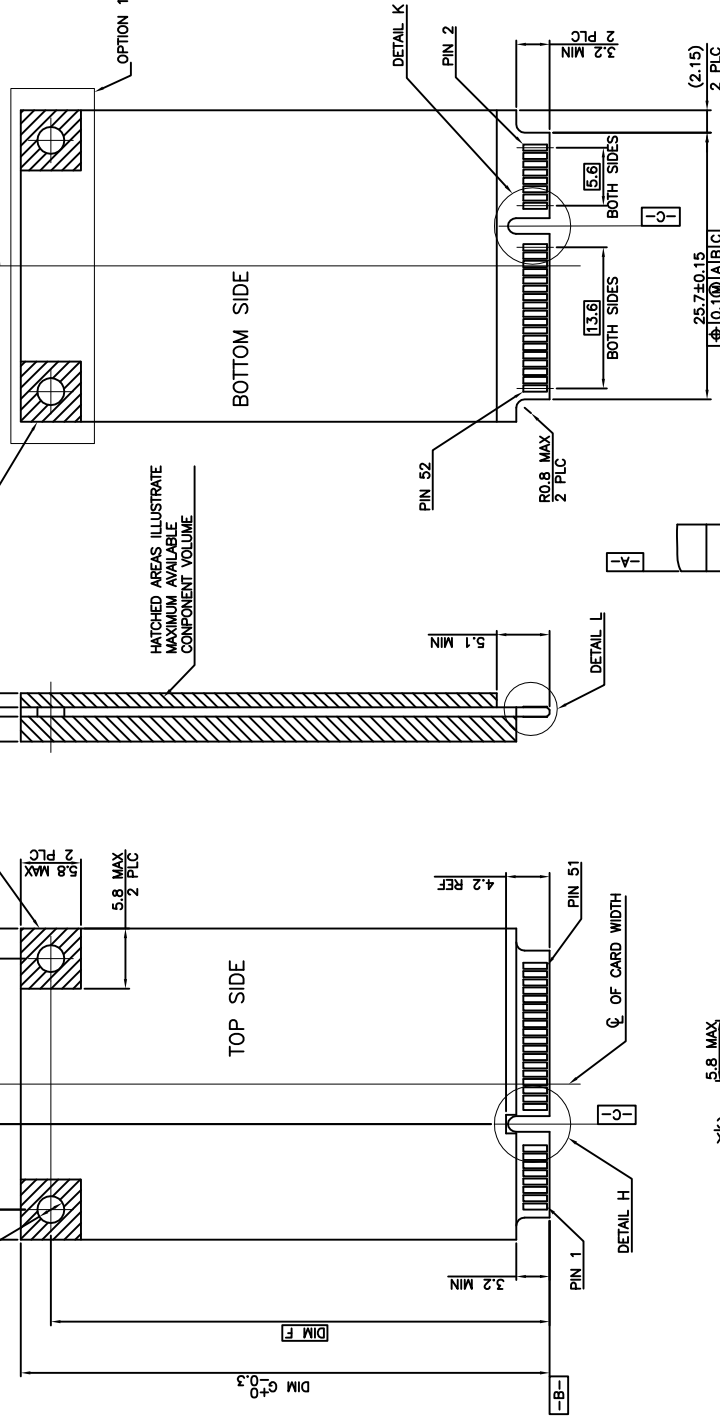
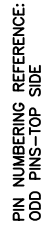
[illegible]



NOTES:

 CARD THICKNESS APPLIES ACROSS TABS AND INCLUDES PLATING AND/OR METALLIZATION.

 EDGE BEVEL MUST BE PRESENT AND FREE OF CUTTING BURRS FROM PCB AND CONTACT MATERIALS



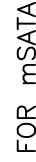
OPTION 1
FOR HALF-MINI CARD
(TOP & BOTTOM SIDE)

[illegible]





A COMPONENT AND ROUTING (TOP/BOTTOM LAYER) KEEP OUT AREA FOR HOLD DOWN SOLUTIONS.

COMPONENT AND ROUTING (ALL LAYERS)
KEEP OUT AREA FOR HOLD DOWN SOLUTIONS



OPTION 2



TITLE: MINI PCI EXPRESS 8.0MM HEIGHT					
PART NO.		AF00780052XXX			
DWG NO.		80052XXX			
		UNITS	SCALE	SHEET	REV
		MM	1 : 1	5 OF 5	0
7				8	CUSTOMER