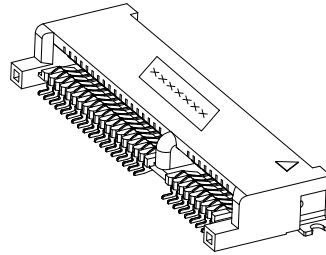
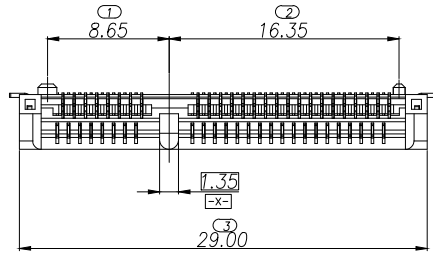


HF

Halogen Free



NOTE:

1.MATERIAL:

1.1.HOUSING: LCP HIGH TEMPERATURE THERMOPLASTIC,UL94V-0,COLOR:BLACK

1.2.CONTACTS: COPPER ALLOY;

1.3.PEG: COPPER ALLOY.

2.REFLOW SOLDER CAPABLE TO 260°C

3.FINISH:

CONTACT AREA:GOLD PLATING,SEE PART NO..

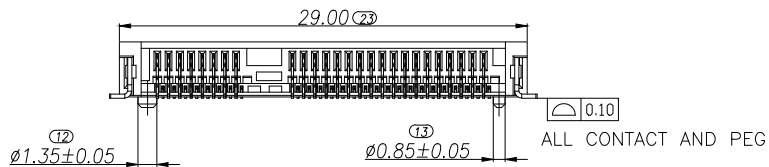
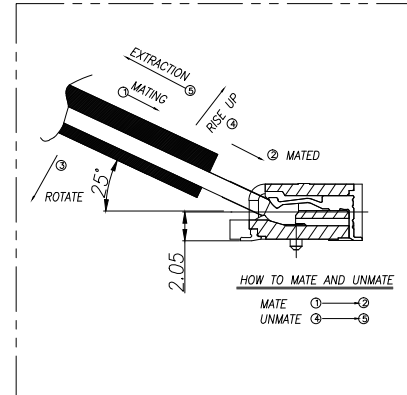
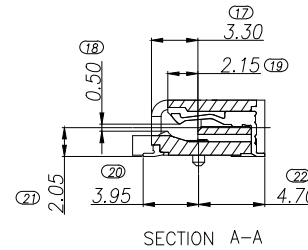
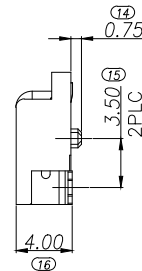
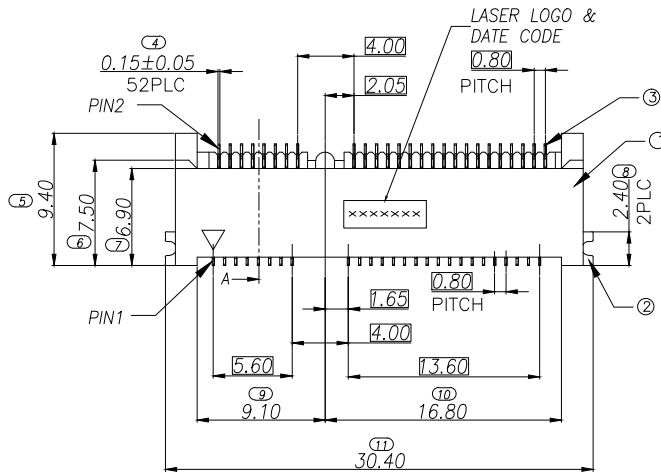
SOLDER AREA:GLOD FLASH PLATING

1.27um[50u"] MIN. NICKEL UNDERPLATING OVERALL.

PEG: 2.54um[100u"] MIN.MATTE-TIN. 1.27um[50u"] MIN.NICKEL PLATED

4.PART NO: A1099052XXRHF

HALONGEN FREE
PACKING OPTION
R:TAPE&REEL
T:TRAY
PLATING
1:G/F
2:10u"
3:15u"
4:30u"
LOGO
0:NO LOGO
1:DEREN LOGO
PIN NUMBER
052:52PIN



ALL CONTACT AND PEG

ITEM	MANE	QUANTITY	DIM	TOL	DIM	TOL	DRAW NO.	CUSTOMER DRAWING				TITLE: MINI PCI EXPRESS 52PIN 4.0H CONNECTOR
								DESIGN:	DATE	P/N:	SCALE:	
1	HOUSING	1 PCS	.x	±0.30	.x	±2°	T-12-0330	QIWEI_ZHAO	2014.07.08	A1099052XXRHF	1/4	mm
2	PEG	2 PCS	.x	±0.25	.x	±1°		MAOJIE_DONG	2014.07.08		1:1	
3	CONTACT	52 PCS	.xxx	±0.15				MAOJIE_DONG	2014.07.08		1:1	

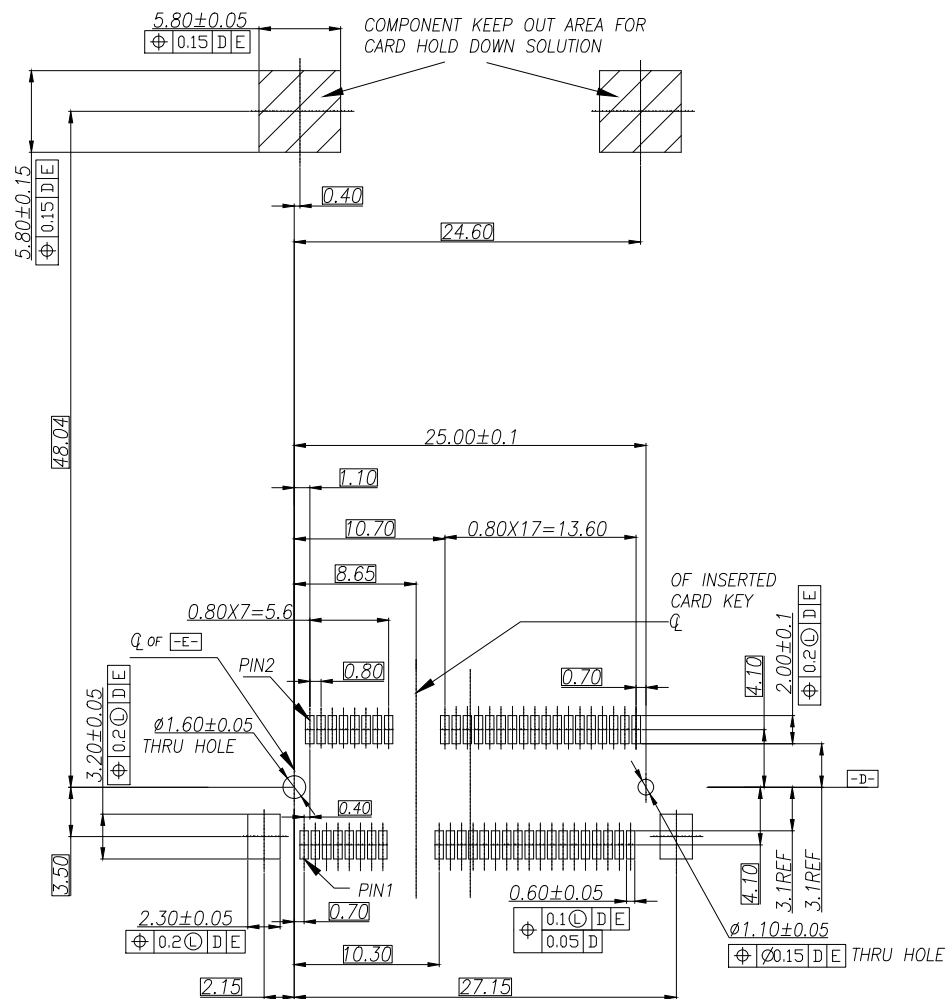
CONSHARE

CUSTOMER DRAWING		DATE		TITLE: MINI PCI EXPRESS 52PIN 4.0H CONNECTOR	
DESIGN:	QIWEI_ZHAO	2014.07.08	P/N:	A1099052XXRHF	
CHECK:	MAOJIE_DONG	2014.07.08	SHEET:	1/4	
APPROVAL:	MAOJIE_DONG	2014.07.08	SCALE:	1:1	UNIT: mm

Halogen Free

~~PB~~

REV.	ECN NO.	LOCATION	DESCRIPTION	DATE	DESIGN
A			INITIAL RELEASE	2012.09.12	Dongmaojie
B			REVISE	2014.07.08	Qiwei_Zhao



RECOMMENDED PCB LAYOUT

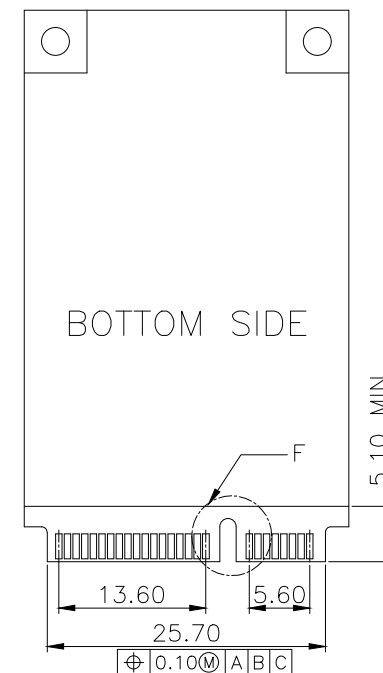
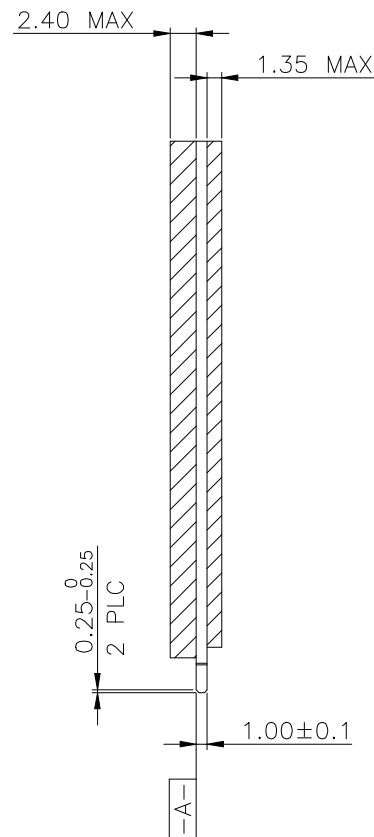
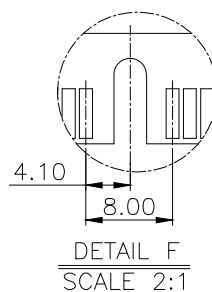
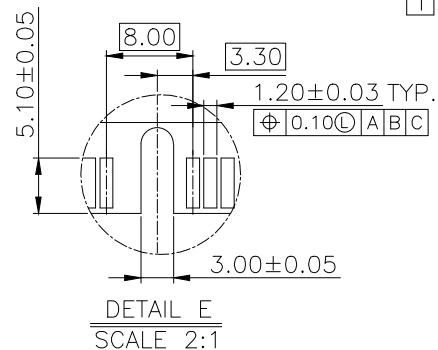
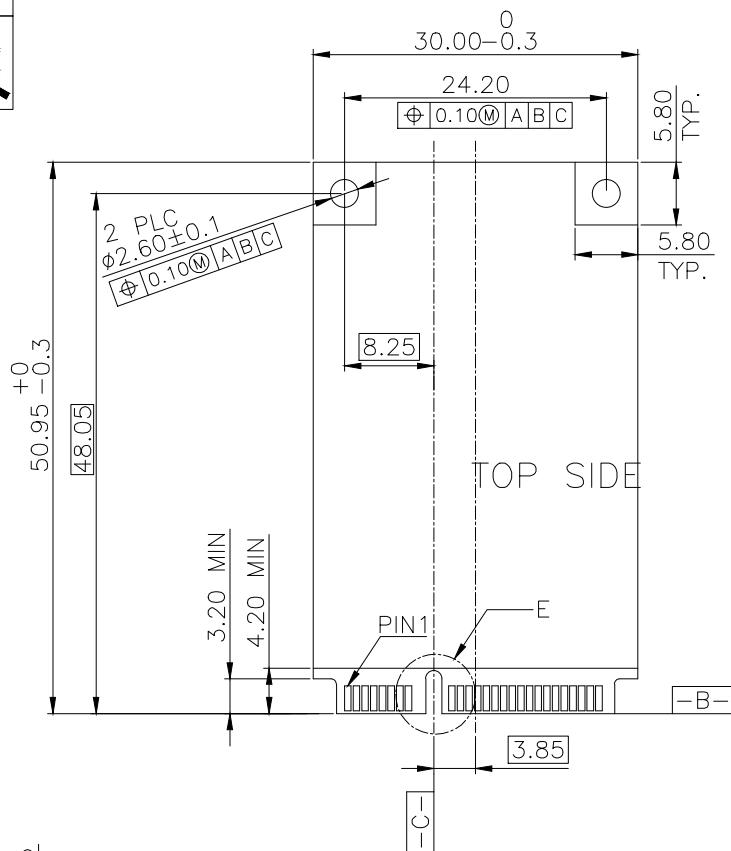
THICKNESS:1.20±0.05mm

DIM		TOL									
DIM		TOL									
x.	±0.30	x.	±2'	DRAW NO. T-12-0330		CUSTOMER		DRAWING	DATE	TITLE: MINI PCI EXPRESS 52PIN 4.0H CONNECTOR	
.x	±0.25	.x	±1'			DESIGN:	Qiwei_Zhao	2014.07.08	P/N: A1099052XXRHF		
.xx	±0.20					CHECK:	Maojie_Dong	2014.07.08	SHEET: 2/4 		
.xxx	±0.15					REV.	B	APPROVAL:	Maojie_Dong	2014.07.08	SCALE: 1:1 UNIT: mm

HF
Halogen Free



REV.	ECN NO.	LOCATION	DESCRIPTION	DATE	DESIGN
A			INITIAL RELEASE	2012.09.12	Dongmaojie
B			REVISE	2014.07.08	Qiwei_Zhao



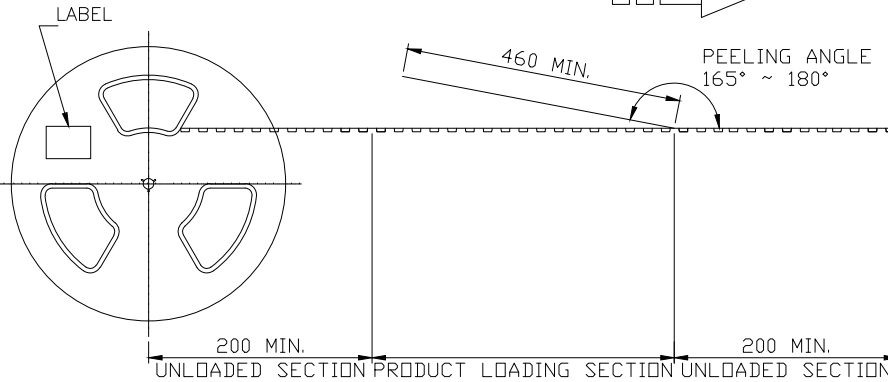
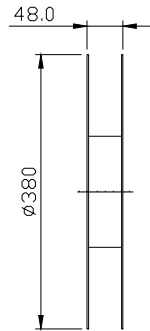
NOTES:
1.52PIN DISPLAY-MINI CARD SPECATIFICATION

NOTES:
1.PIN NUMBERING REFERENCE:
ODD PINS:TIP SIDE
EVEN PINS:BOTTOM SIDE

DIM	TOL	DIM	TOL	CUSTOMER DRAWING				DATE		TITLE: MINI PCI EXPRESS 52PIN 4.0H CONNECTOR	
x.	±0.30	x.	±2°	DRAW NO. T-12-0330				DESIGN: Qiwei_Zhao		P/N: A1099052XXRHF	
.x	±0.25	.x	±1°					CHECK: Maojie_Dong		SHEET: 3/4	
.xx	±0.15			REV. B				APPROVAL: Maojie_Dong		SCALE: 1:1	
								2014.07.08		UNIT: mm	

CONSHARE

HF
Halogen Free



NOTES :

1. MATERIAL :

COVER TAPE : ANTISTATIC P.S T=0.05±0.01

CARRIER TAPE : ANTISTATIC P.S T=0.40±0.10

REEL : PS UL94V-0

CARTON: CORRUGATED FIBER

2. DIMENSION :

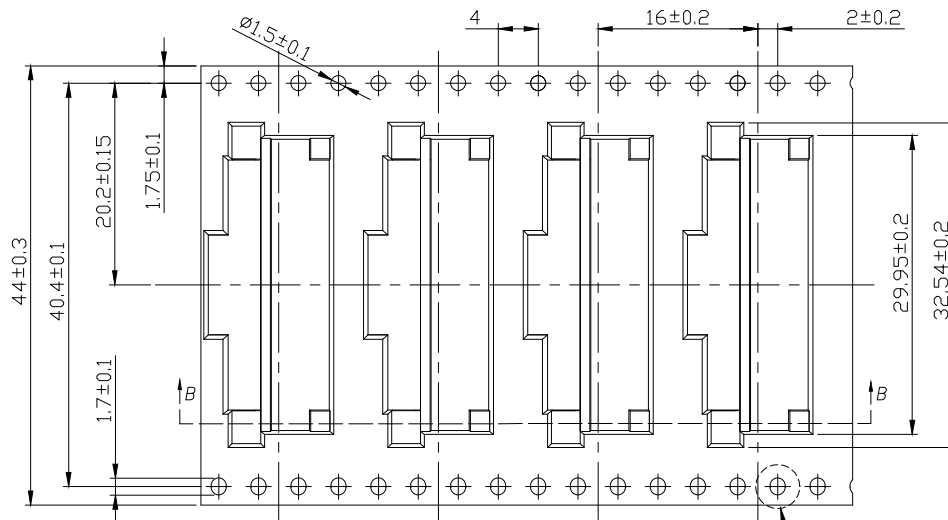
REEL : SEE DRAWING

SHIPPING BOX: 385X385X295mm

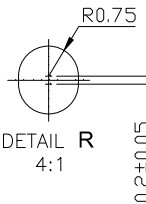
3. QUANTITY : SEE TABLE

4. PEELING RESISTANCE : 10gf~130gf (for 12~56mm)

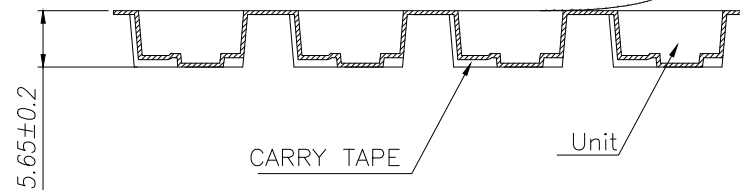
5. PEELING SPEED : 300mm/MINUTES



DETAIL R

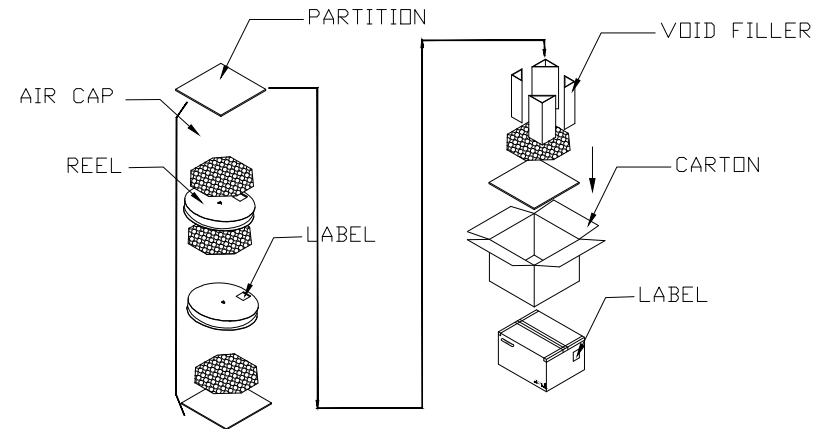


COVER TAPE



CARRY TAPE

Unit



X.XXKG	X.XXKG	900	5	4500	A1099052XXRHF
GROSS WEIGHT	NET WEIGHT	PCS/ REEL	REEL/ CARTON	PCS/ CARTON	PART NUMBER

CONSHARE					
CUSTOMER DRAWING		DATE		TITLE: MINI PCI EXPRESS 52PIN 4.0H CONNECTOR	
DRAW NO. T-12-0330		DESIGN: Qiwei_Zhao	2014.07.08	P/N: A1099052XXRHF	
REV. B		CHECK: Maojie_Dong	2014.07.08	SHEET: 4/4	UNIT: mm
APPROVAL: Maojie_Dong		2014.07.08	SCALE: 1:1		