

客户图

NOTES:

1. FINISH:

- 1.1 HOUSING: LCP BLACK,UL94V-0.
- 1.2 CONTACT: PHOSPHOR BRONZE ,GOLD (SEE P/N) PLATED IN CONTACT AREA, 80u" MIN MATTE TIN PLATED IN SOLDER AREA, 50u" MIN. NICKEL UNDERPLATED OVERALL.

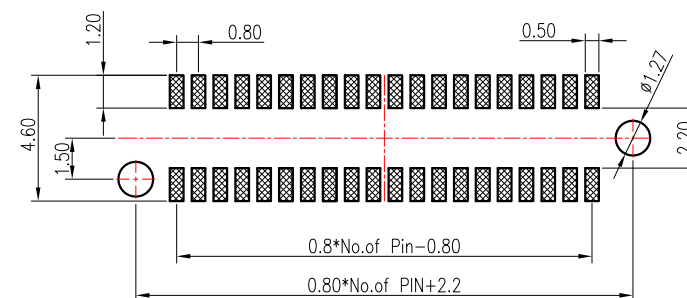
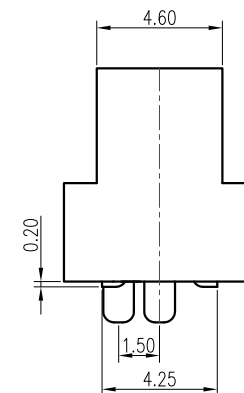
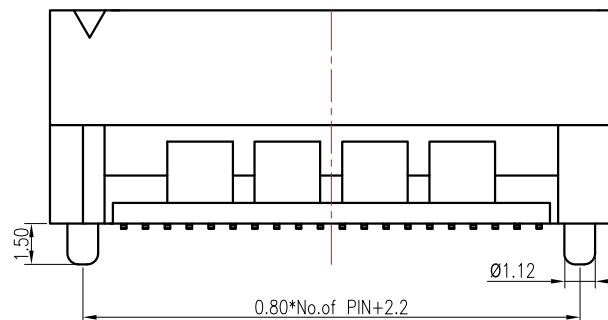
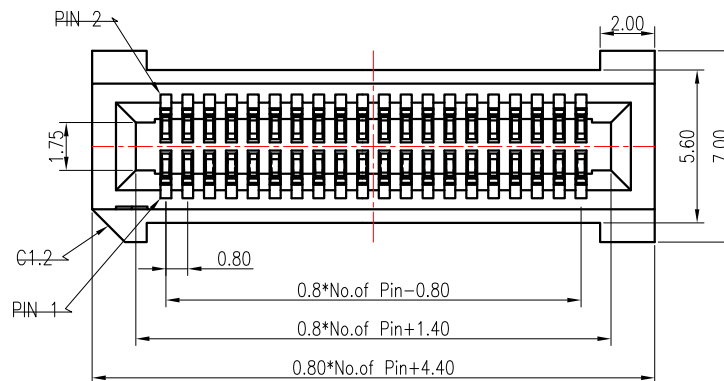
2. ELECTRICAL:

- 2.1 CURRENT RATING:3A;
- 2.2 DIELECTRIC WITHSTANDING VOLTAGE: 500V AC/MINUTE.
- 2.3 CONTACT RESISTANCE: 30mΩ MAX.
- 2.4 INSULATION RESISTANCE: 1000MΩ MIN.
- 2.5 OPERATION TEMPERATURE:-40°C TO +105°C.



3.ORDER INFORMATION:

AA XXX XX 078 C 01

Pin数码	端子电镀:	塑胶高度:	包装方式:
010=2x5PIN	S1=1u" Gold/Tin	078=7.8mm	C=TRAY
.....	S2=3u" Gold/Tin		
100=2x50PIN	S3=5u" Gold/Tin		
	S4=10u" Gold/Tin		
	S5=15u" Gold/Tin		
	S6=30u" Gold/Tin		



RECOMMENDED PCB LAYOUT(TOP SIDE)
PCB BOARD TOLFRANCF±0.05

					OPERATION		DRAW		FDL		2019.08.30							
					X.X	±0.40	DESIGN		Jensen		2019.08.30							
					X.XX	±0.25	CHECK		Jack		2019.08.30							
					X.XXX	±0.15	APPROVE		Andy		2019.08.30							
AO		NEW		_____	_____	Angle	±3°					SHEET		1/2	TITLE:		0.8mm SLOT 直立式SMT CONNECTOR	
REV	DATE	MODIFICATION DESCRIPTION			CHANGE	APPROVE	DIM.	TOL	UNIT	mm	SCALE	1:1	PROJ.		DRAW NO.		SP-227	