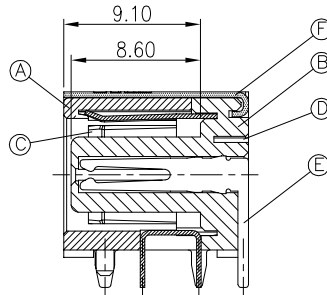
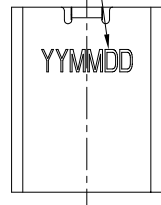


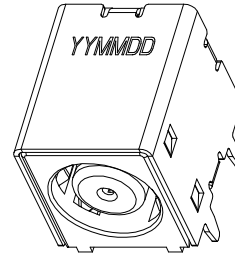
ZONE	SYMBOL	REVISION	APPROVAL	DATE

DATE CODE YYMMDD

DD: DAY
MM: MONTH
YY: YEAR



SECTION A-A
SCALE 1:1



SPECIFICATIONS:

1. ELECTRICAL CHARACTERISTICS:

- 1-1. RATING: 24V 7A
- 1-2. CONTACT RESISTANCE: 30mΩ MAX.(INITIAL)
- 1-3. DIELECTRIC WITHSTANDING VOLTAGE: 500V AC FOR ONE MINUTE.
- 1-4. INSULATION RESISTANCE: 100MΩ MIN. MEASURED BY 500 VDC

2. MECHANICAL CHARACTERISTICS:

- 2-1. INSERTION FORCE : 3.0 KGF Max.
- 2-2. WITHDRAWAL FORCE : 0.35 KGF Min.

3. LIFE TEST: 5,000 CYCLES MIN.

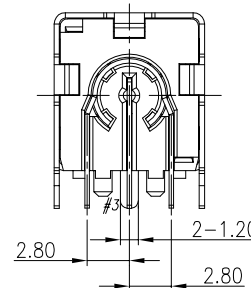
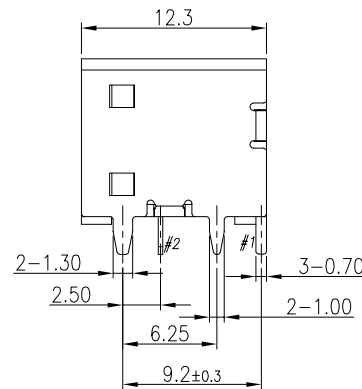
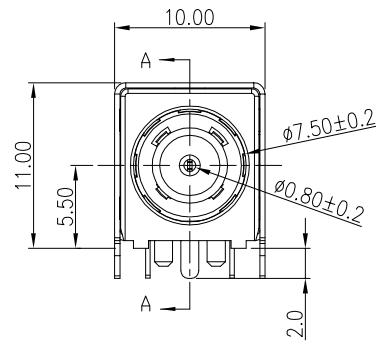
4. TO CONFORM TO SINGATRON HAZARDOUS SUBSTANCE FREE SPEC.

5. HALOGEN FREE PRODUCT IDENTIFICATION MARK ON PRODUCT:

6. HALOGEN FREE PRODUCT IDENTIFICATION LOGO ON THE PACKAGING:

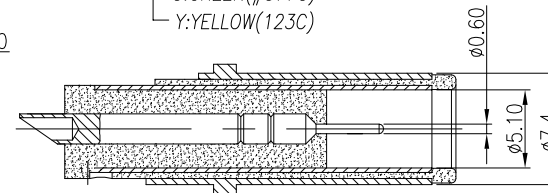
7. FOR REFLOW SOLDERING LEAD-FREE PROCESS.

8. THE PANEL'S ID MUST BE GREATER THAN THE PLUG'S OD WHICH MUST HAVE A DIFFERENCE OF LESS THAN OR EQUAL TO 0.50mm.(AS SHOWN IN FIGURE 1.)



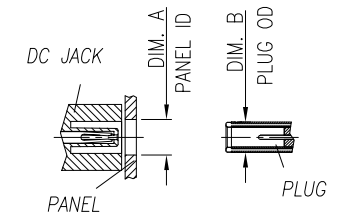
C1021C 09DX HPA

B:BLACK
P:PINK(#199C)
G:GREEN(#577C)
Y:YELLOW(123C)



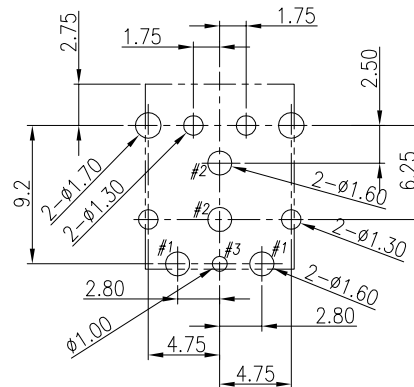
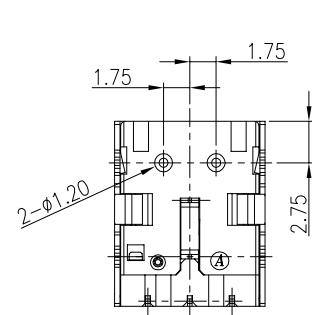
MATING PLUG: OD 7.4 ; ID 0.6

Tolerance:±0.05

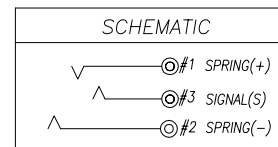


DIM. A-DIM.B ≤ 0.5

FIGURE 1



RECOMMENDED P.C.B LAYOUT
TOP VIEW (TOLERANCE:±0.05)

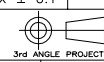


NO	DESCRIPTION	QTY	MATERIAL	PLATING & COLOR
F	SHELL	1	BRASS 0.35T	Ni 60u"Min
E	SIGNAL (S)	1	COPPER ALLOY 0.3T	GOLD FLASH OVER Ni 50u"
D	SPRING (+)	1	COPPER ALLOY 0.3T	GOLD FLASH OVER Ni 50u"
C	SPRING (-)	1	COPPER ALLOY 0.3T	GOLD FLASH OVER Ni 50u"
B	COVER	1	LCP UL 94V-0	
A	HOUSING	1	LCP UL 94V-0	

UNLESS OTHERWISE SPECIFIED
DIMENSION ARE IN CENTIMETERs
TOLERANCE ARE :
FRACTION DECIMALS ANGLES

.X ± 0.3
.XX ± 0.2
.XXX ± 0.1

X' ± 5'
.X' ± 3'



SCALE 1:1 UNIT mm SIZE A4

APPROVALS
DRAWN WANGWEI
CHECKED JACK
APPROVED

DATE
2012/10/10
2012/10/10
2012/10/10

TITLE
DC POWER JACK
PART NO.

C1021C09DXHPA

