

F

E

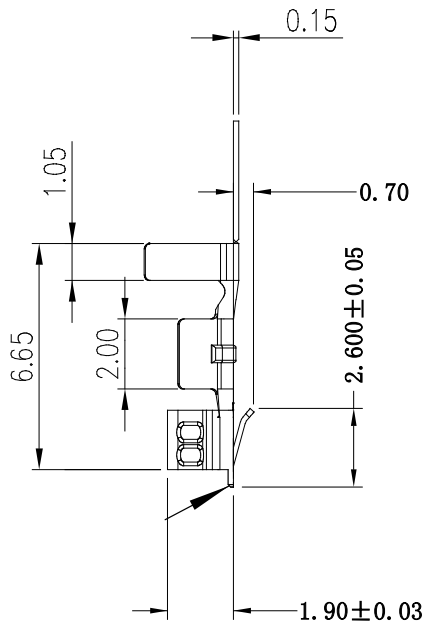
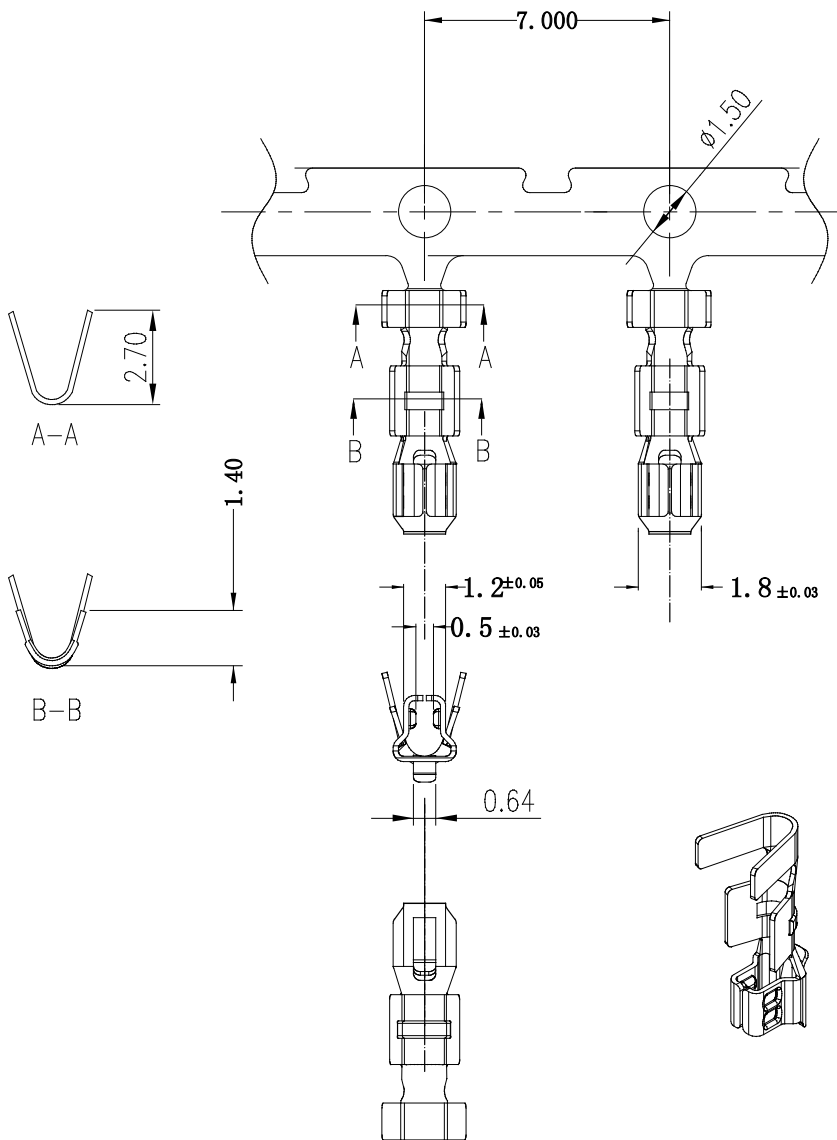
D

C

B


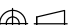
A

10987654321



Ordering information & Specifications

Part No	Wire Range	Insultion O.D.	Material	Finish	Qty/reel
B701000610010	AWG#22_#28	1.90mm(max)	Phosphor Bronze	Tin over Nickel	6,000 PCS

QUALITY SYMBOLS △ II 0	GENERAL TOLERANCES (UNLESS SPECIFIED)		DRAWN BY DATE Angel 2019/07/22			
			CHECKED BY DATE Paul 2019/07/22			
		MM	APPROVED BY DATE Paul 2019/07/22		TITLE 2. 54mm端子图	
	0.0	± 0.05				
	0.00	± 0.03				
	0.000	± 0.01	P/N B701000610010		DRAWING NO. B701000610010	
				SHEET NO. 1 OF 1		
ANGULAR± 2		FRAME SIZE A1		SCALE 1:1	DESIGN UNITS MM	 THIRD ANGLE PROJECTION