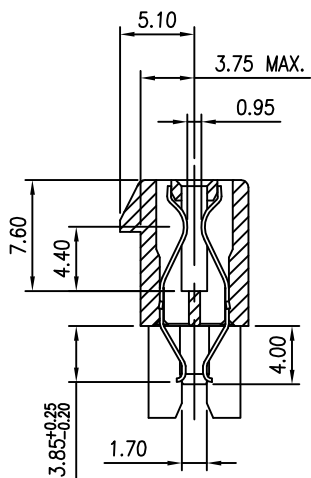
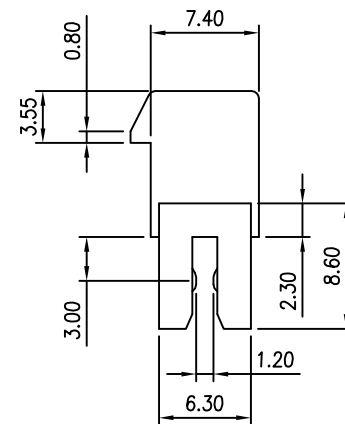
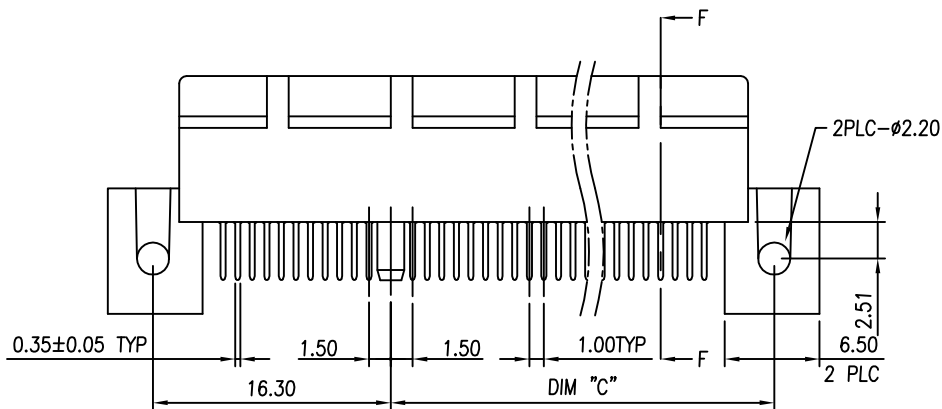


WITH MOUNTING EAR TYPE




SECTION F-F

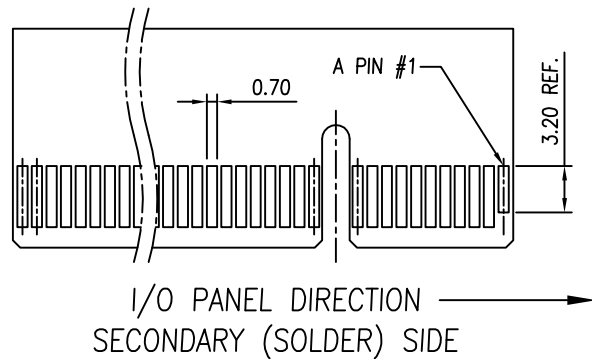
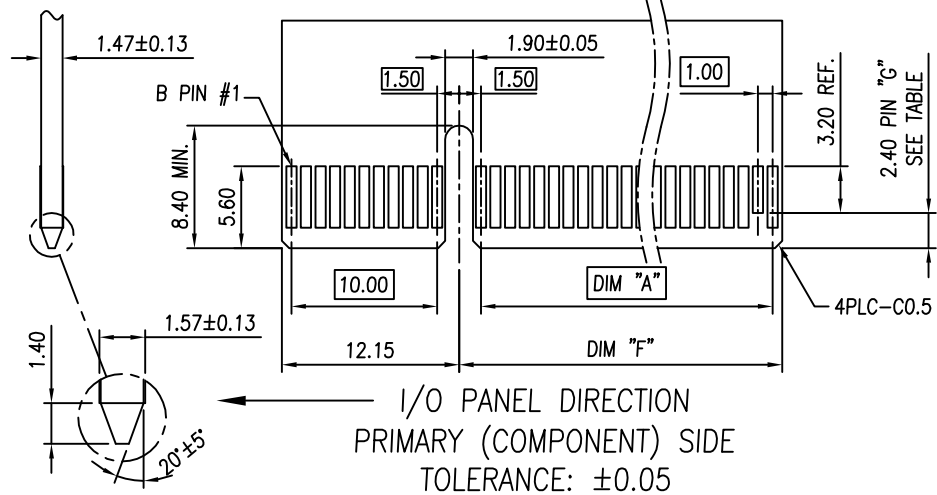


1. MATERIAL:

- 1.1 HOUSING: THERMOPLASTIC, HIGH TEMP.,
UL94V-0;
COLOR: BLACK.
- 1.2 CONTACTS: COPPER ALLOY.
2. FINISH:
 - 2.1 CONTACT:
SELECTIVE GOLD PLATING ON CONTACT AREA.
100 μ " MIN. MATTE TIN PLATING ON SOLDER TAILS,
50 μ " MIN. NICKEL UNDERPLATING OVERALL.
3. PRODUCT SPEC.: PS-3G10-01

| DIMENSIONS | | | | | |
|------------|--------------|--|--------------|--------------|--------------|
| POSITION | A ± 0.20 | B $\begin{smallmatrix} +0.15 \\ -0.05 \end{smallmatrix}$ | C ± 0.20 | D ± 0.25 | E ± 0.30 |
| 36 | 6 | 7.65 | 12.30 | 25.00 | 34.8 |
| 64 | 20 | 21.65 | 26.30 | 39.00 | 48.8 |
| 98 | 37 | 38.65 | 43.30 | 56.00 | 65.8 |
| 164 | 70 | 71.65 | 76.30 | 89.00 | 98.8 |

| | | | | | | | | | | | | |
|-----|---------|--------|-------------|-----------|--------|---|---------|---|-------|-------|--------|-----|
| | | | | TOLERANCE | |  | | TITLE: PCI EXPRESS 1.0mm CARD EDGE ASSY', STRADDLE MOUNT TYPE | | | | |
| E | 10041 | Terry | Jun,08,2011 | LINEAR | ANGLES | | | PART NO. AF312610X0XD | | | | |
| D | 10017 | Terry | Apr,15,2010 | X.±0.40 | X'.± | | | | | | | |
| C | 09041 | Terry | Jan,20,2009 | .X±0.30 | .X'± | APPD: Jason | MAT'L: | DWG NO. 312607001 | | | | |
| B | 08048 | Schumi | Aug,19,2008 | .XX±0.20 | .XX'± | CHKD: Schumi | FINISH: |  | UNITS | SCALE | SHEET | REV |
| REV | ECN NO. | NAME | DATE | .XXX±0.10 | .XXX'± | DRWN: Terry | Q'TY: | | MM | 1 : 1 | 1 OF 6 | E |



| DIMENSIONS | | | | |
|------------|--------|--------|--------|------------|
| POSITION | DIM. A | DIM. C | DIM. F | PIN "G" |
| 36 | 6 | 12.30 | 8.15 | B PIN #B17 |
| 64 | 20 | 26.30 | 22.15 | B PIN #B31 |
| 98 | 37 | 43.30 | 39.15 | B PIN #B48 |
| 164 | 70 | 76.30 | 72.15 | B PIN #B81 |



PART NO.

AF 3126

1 0 X 0 X D

PCI EXPRESS Series No.

HSG Color

1: Black

TYPE

0: WITH MOUNTING EAR

Packing Options

D: Tray With Dummy Card

No. of Pins

0: 36P

1: 64P

2: 98P

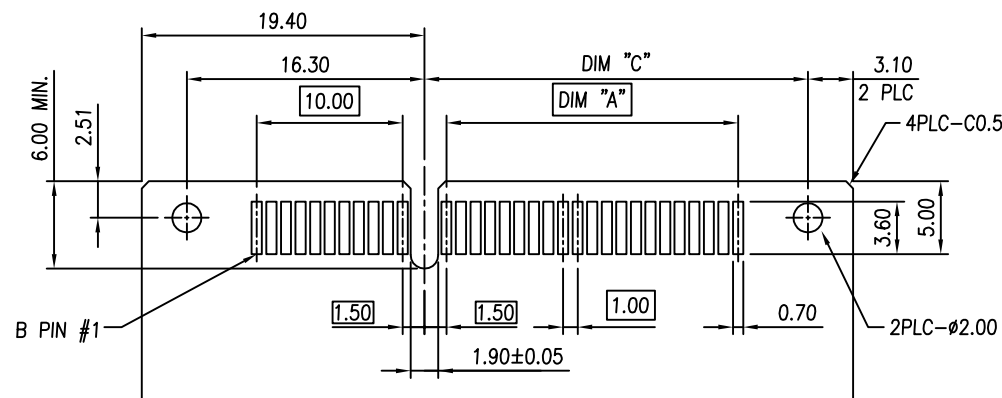
3: 164P

Contact Plating

0: 30μ", Gold

1: 15μ", Gold

2: 1μ", Gold



RECOMMENDED OF PCB DIMENSIONS

TOLERANCE: ±0.05

| TOLERANCE | |
|-----------|--------|
| LINEAR | ANGLES |
| X. | X'± |
| .X | .X'± |
| .XX | .XX'± |
| .XXX | .XXX'± |



TITLE: PCI EXPRESS 1.0mm
CARD EDGE ASSY', STRADDLE MOUNT TYPE

PART NO. AF312610X0XD

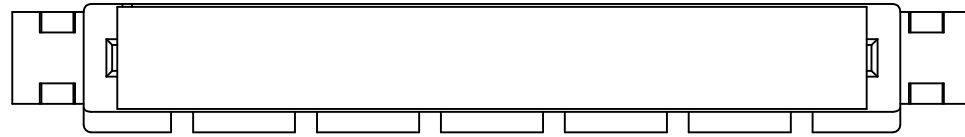
DWG NO. 312607001

| | | | |
|-----|-------------|------|------|
| REV | See Sheet 1 | NAME | DATE |
| 1 | ECN NO. | | |

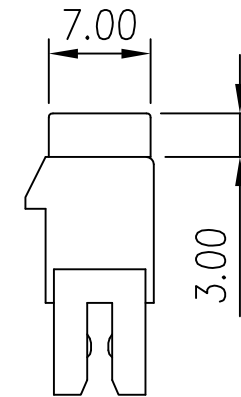
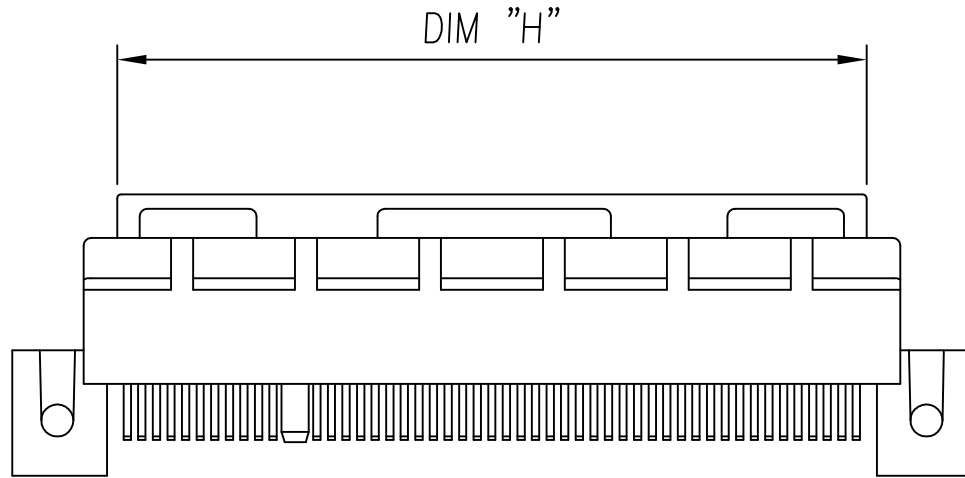
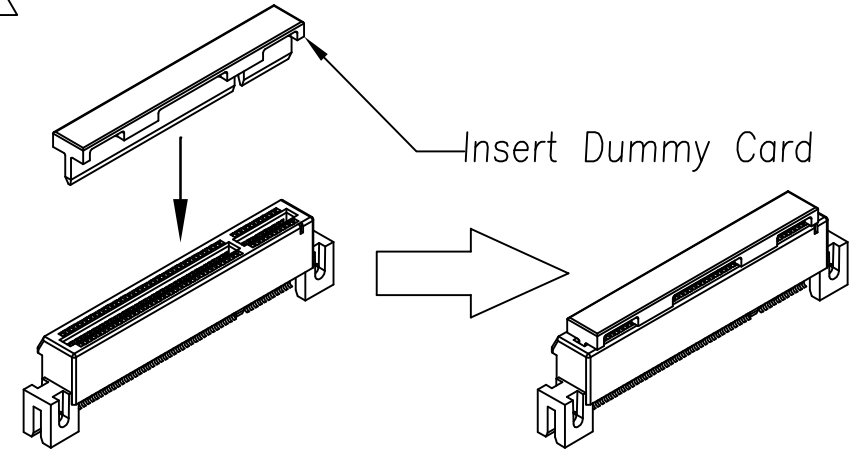
| | |
|--------------|---------|
| APPD: Jason | MAT'L: |
| CHKD: Schumi | FINISH: |
| DRWN: Terry | Q'TY: |

| | | | |
|-------|-------|--------|-----|
| UNITS | SCALE | SHEET | REV |
| MM | 1 : 1 | 2 OF 6 | E |

CUSTOMER



E



| DIMENSIONS | |
|------------|--------|
| POSITION | DIM. H |
| 36 | 20.4 |
| 64 | 34.4 |
| 98 | 51.4 |
| 164 | 84.4 |

| TOLERANCE | |
|-----------|--------|
| LINEAR | ANGLES |
| X. | X'± |
| .X | .X'± |
| .XX | .XX'± |
| .XXX | .XXX'± |

CONSHARE

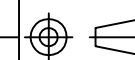
TITLE: PCI EXPRESS 1.0mm
CARD EDGE ASSY', STRADDLE MOUNT TYPE

PART NO. AF312610X0XD

DWG NO. 312607001

| | | | |
|---------|-------------|------|------|
| REV | See Sheet 1 | NAME | DATE |
| ECN NO. | | | |

| | | | |
|-------|--------|---------|--|
| APPD: | Jason | MAT'L: | |
| CHKD: | Schumi | FINISH: | |
| DRWN: | Terry | Q'TY: | |



| UNITS | SCALE | SHEET | REV |
|-------|-------|--------|-----|
| MM | 1 : 1 | 3 OF 6 | E |

CUSTOMER