



REV.	ECN NO.	LOCATION	DESCRIPTION	DATE	DESIGN
A			INITIAL RELEASE	04/29'14	Sally.Duan
B		⑦~⑨	UPDATE DRAWING	09/24'14	Wangtianxi

**NOTES:**

- MATERIAL:  
1.1 HOUSING:HIGH TEMPERATURE THERMOPLASTIC, UL94V-0,COLOR:BLACK.  
1.2. CONTACT:COPPER ALLOY.  
1.3. SOLDER PEG:STAINLESS STEEL.
- FINISH:  
2.1 CONTACT:UNDERPLATING NICKEL 50u" MIN ALL OVER.  
MATING AREA:GOLD PLATING, THICKNESS SEE TABLE LIST.  
SOLDER AREA:GOLD FLASH ON SOLDER TAIL.  
2.2 SOLDER PEG:UNDERPLATING NICKEL 50u" MIN ALL OVER,80u" MIN MATTE TIN ON SURFACE
- LOGO&DATE CODE : LOGO: DR OR DEREN,DATE CODE: YYWWDLX  
YY: YEAR (09: 2009)  
WW: WEEK (25: THE 25TH WEEK)  
D: DAY (1~7: SUNDAY~SATURDAY)  
L: LINE NUMBER OF ASSEMBLY (A: LINE A)  
X: D OR N (D: DAY; N: NIGHT)
- CONNECTOR ACTUAL PIN QUANTITY IS 67, AS THE KEY TAKING OUT 8 PINS.
- PART NUMBER DESCRIPTION:  
40-42064-067XXXHF

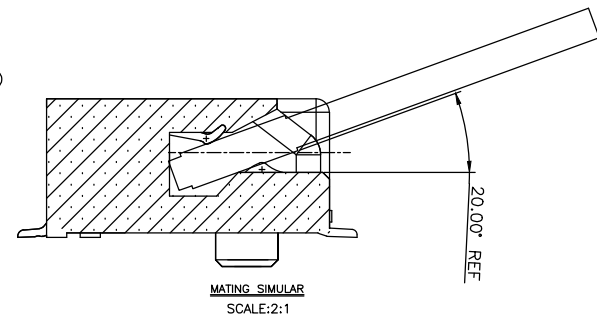
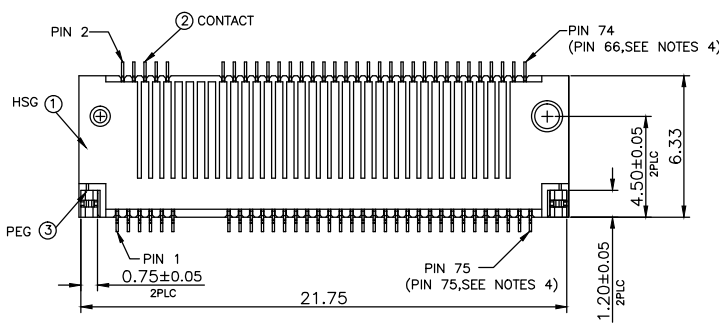
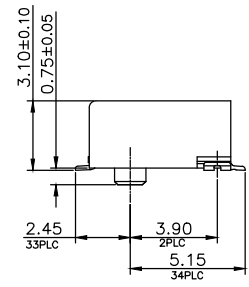
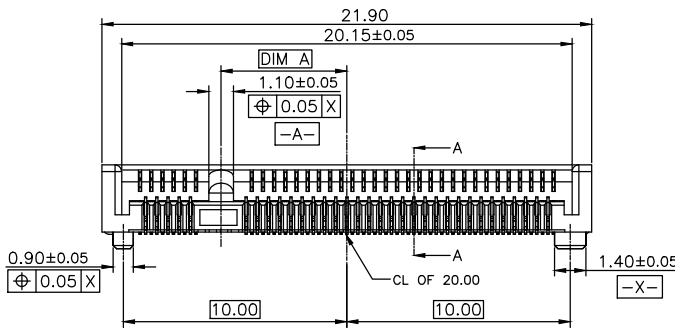
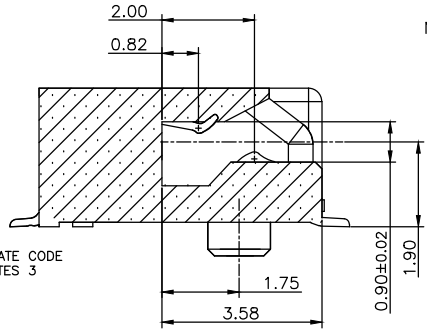
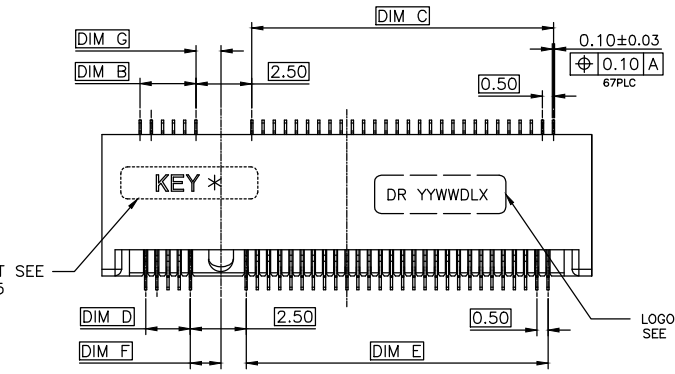
HALOGEN CODE:  
HF:HALOGEN FREE

PACKING CODE:  
R: EMBOSS WIDTH 44mm, SLOT BACKWARD  
⑦ 1: EMBOSS WIDTH 44mm, SLOT FORWARD  
⑧ 2: EMBOSS WIDTH 32mm, SLOT FORWARD  
⑨ 3: EMBOSS WIDTH 32mm, SLOT BACKWARD

PLATING CODE:  
1: GF 2: Au5u"  
3: Au10u" 4: Au15u"  
5: Au30u"

KEY TYPE:  
0: KEY A 6: KEY G  
1: KEY B 7: KEY H  
4: KEY C 8: KEY J  
3: KEY D 9: KEY K  
2: KEY E A: KEY L  
5: KEY F B: KEY M

PIN NUMBER CODE:  
067: 67 PINS



KEY M	-6.125	14.0	2.0	14.0	1.5	1.125	1.375
KEY L	-5.125	13.0	3.0	13.0	2.5	1.125	1.375
KEY K	-4.125	12.0	4.0	12.0	3.5	1.125	1.375
KEY J	-3.125	11.0	5.0	11.0	4.5	1.125	1.375
KEY H	-2.125	10.0	6.0	10.0	5.5	1.125	1.375
KEY G	-1.125	9.0	7.0	9.0	6.5	1.125	1.375
KEY F	1.625	6.5	9.5	6.0	9.5	1.375	1.125
KEY E	2.625	5.5	10.5	5.0	10.5	1.375	1.125
KEY D	3.625	4.5	11.5	4.0	11.5	1.375	1.125
KEY C	4.625	3.5	12.5	3.0	12.5	1.375	1.125
KEY B	5.625	2.5	13.5	2.0	13.5	1.375	1.125
KEY A	6.625	1.5	14.5	1.0	14.5	1.375	1.125
KEY NAME	DIM A	DIM B	DIM C	DIM D	DIM E	DIM F	DIM G

DIM	TOL	DIM	TOL
x.	±0.30	x.	±2°
x.x	±0.25	.x	±1°
.xx	±0.15		
.xxx	±0.05		

CUSTOMER DRAWING				DATE		TITLE: NGFF 3.2H_ASSEMBLY	
DESIGN:		Wang tianxi	09/24'14	P/N: 40-42064-067XXXHF			
CHECK:		董茂杰	09/24'14	SHEET: 1/7			
APPROVAL:		董茂杰	09/24'14	SCALE: N/A		UNIT: mm	

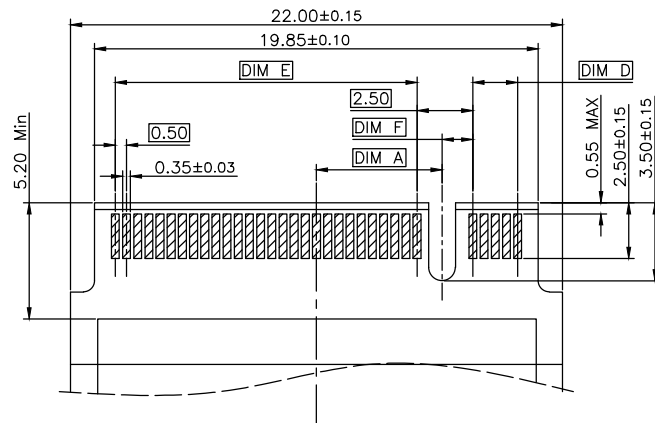


HF  
Halogen Free

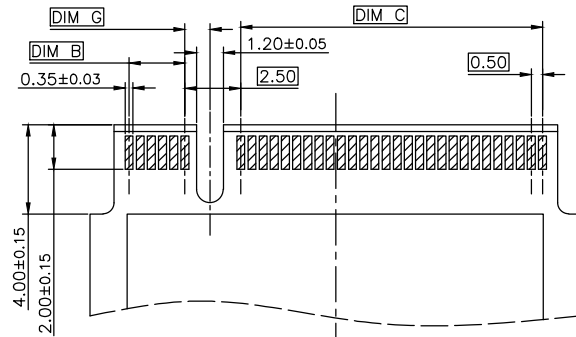
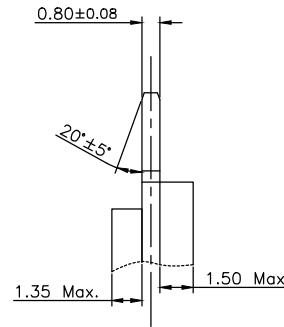


# PLUG PCB

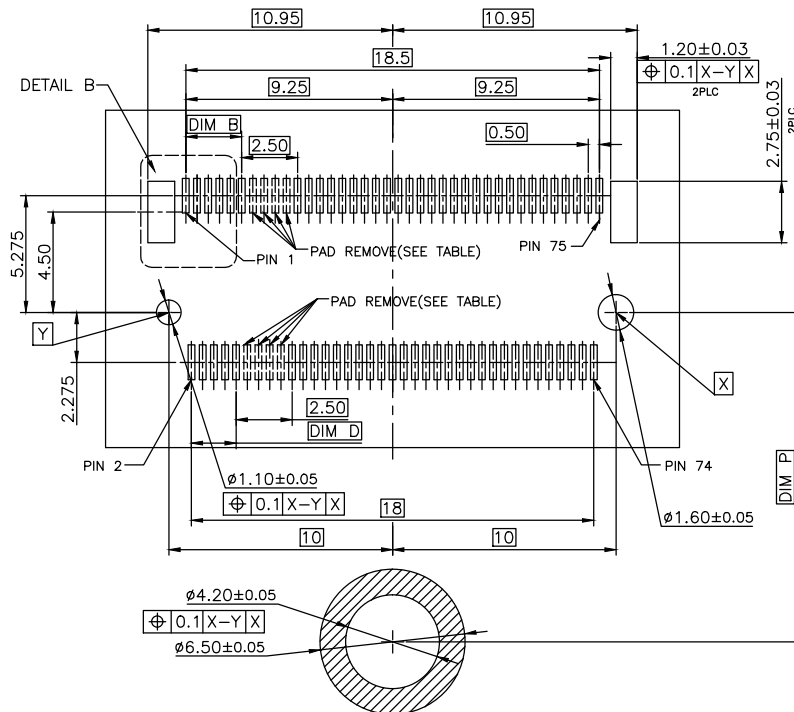
REV.	ECN NO.	LOCATION	DESCRIPTION	DATE	DESIGN
A			INITIAL RELEASE	04/29'14	Sally.Duan
B		⑦/⑧~⑨/⑩	UPDATE DRAWING	09/24'14	Wangtianxi



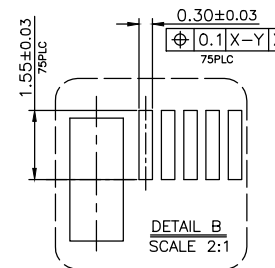
BOTTOM SIDE



TOP SIDE



RECOMMENDED NGFF MOUNTING TYP PCB\_LAYOUT



22110	108.25
2280	78.25
2260	58.25
2242	40.25
2230	28.25
3042	40.25
3030	28.25

MODULE TYPE		DIM P	
M	PIN 59-66	-6.125	14.0
L	PIN 55-62	-5.125	13.0
K	PIN 51-58	-4.125	12.0
J	PIN 47-54	-3.125	11.0
H	PIN 43-50	-2.125	10.0
G	PIN 39-46	-1.125	9.0
F	PIN 28-35	1.625	6.5
E	PIN 24-31	2.625	5.5
D	PIN 20-27	3.625	4.5
C	PIN 16-23	4.625	3.5
B	PIN 12-19	5.625	2.5
A	PIN 8-15	6.625	1.5

DIM	TOL	DIM	TOL
.x	±0.30	.x	±2°
.x	±0.25	.x	±1°
.xx	±0.15		

**CONSHARE**

CUSTOMER DRAWING

DATE

TITLE: NGFF 3.2H\_ASSEMBLY

DESIGN: Wang tianxi

P/N: 40-42064-067XXXHF

CHECK: 董茂杰

SHEET: 2/7

APPROVAL: 董茂杰

SCALE: N/A

REV. B

UNIT: mm

DRAW NO.  
\*\*\*\*