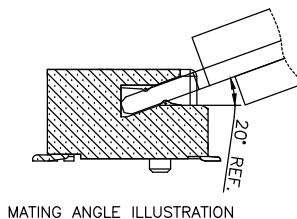
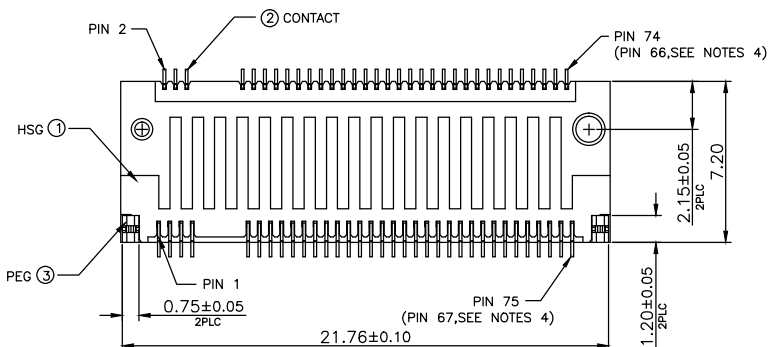
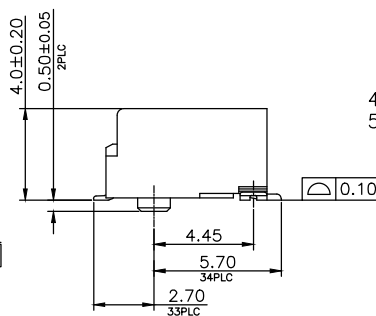
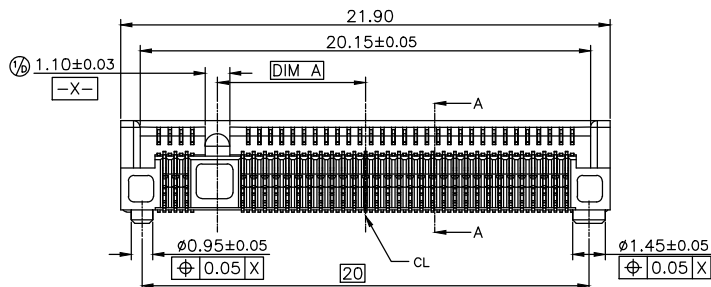
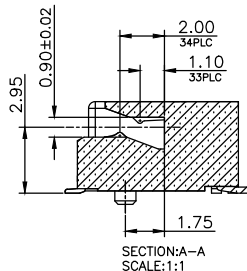
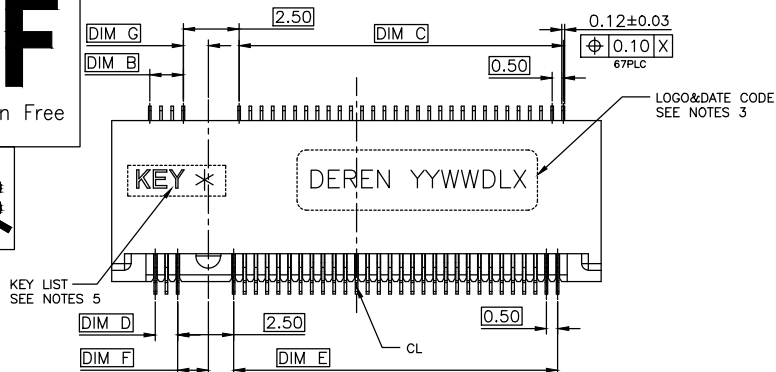


HF

Halogen Free



NOTES:

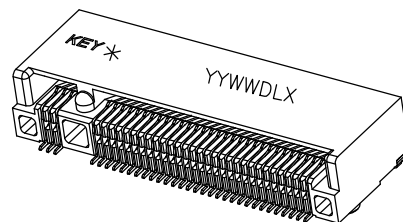
- MATERIAL:
 - HOUSING:HIGH TEMPERATURE THERMOPLASTIC,UL94V-0,COLOR:BLACK
 - CONTACT: PHOSPHOR BROZNE.
 - SOLDER PEG:STAINLESS STEEL. ㊄
- FINISH:
 - CONTACT: UNDERPLATING NICKEL 50u" MIN OVERALL, GF PLATING ON SOLDER AREA. CONTACT AREA: SEE TABLE,
 - SOLDER PEG: MATTE TIN 100u" MIN. AND NICKEL 50u" MIN UNDER PLATED.
- LOGO&DATE CODE: LOGO:DEREN OR DR,DATE CODE:YYWDDLX
YY: YEAR (09: 2009)
WW: WEEK (25: THE 25TH WEEK)
D: DAY (1~7: SUNDAY~SATURDAY)
L: LINE NUMBER OF ASSEMBLY (A: LINE A)
X: D OR N (D: DAY; N: NIGHT)
- CONNECTOR ACTUAL PIN QUANTITY IS 67, AS THE KEY TAKING OUT 8 PINS.
- PART NUMBER DESCRIPTION:
40-42191-067XXXHF-XX

HALOGEN CODE:
HF:HALOGEN FREE
X: PACKING CODE:
R: EMBOSS WIDTH 44mm, SLOT BACKWARD
1: EMBOSS WIDTH 32mm, SLOT FORWARD
2: EMBOSS WIDTH 32mm, SLOT BACKWARD
3: EMBOSS WIDTH 44mm, SLOT FORWARD
PLATING CODE: 1: GF 2: Au5u"
3: Au10u" 4: Au15u"
5: Au30u"

KEY TYPE:
0: KEY A 6: KEY G
1: KEY B 7: KEY H
2: KEY C 8: KEY J
3: KEY D 9: KEY K
4: KEY E A: KEY L
5: KEY F B: KEY M

PIN NUMBER CODE:
067: 67 PINS

KEY M	-6.125	14.0	2.0	14.0	1.5	1.125	1.375
KEY L	-5.125	13.0	3.0	13.0	2.5	1.125	1.375
KEY K	-4.125	12.0	4.0	12.0	3.5	1.125	1.375
KEY J	-3.125	11.0	5.0	11.0	4.5	1.125	1.375
KEY H	-2.125	10.0	6.0	10.0	5.5	1.125	1.375
KEY G	-1.125	9.0	7.0	9.0	6.5	1.125	1.375
KEY F	1.625	6.5	9.5	6.0	9.5	1.375	1.125
KEY E	2.625	5.5	10.5	5.0	10.5	1.375	1.125
KEY D	3.625	4.5	11.5	4.0	11.5	1.375	1.125
KEY C	4.625	3.5	12.5	3.0	12.5	1.375	1.125
KEY B	5.625	2.5	13.5	2.0	13.5	1.375	1.125
KEY A	6.625	1.5	14.5	1.0	14.5	1.375	1.125
KEY NAME	DIM A	DIM B	DIM C	DIM D	DIM E	DIM F	DIM G



DIM	TOL	DIM	TOL
.x	±0.30	.x	±2°
.x	±0.25	.x	±1°
.xx	±0.15		

DRAW NO.		CUSTOMER DRAWING		DATE		TITLE: NGFF 4.0H_DR Logo_C DWG	
T-13-0589		DESIGN:		Sally Duan		P/N: 40-42191-067XXXHF-XX	
		CHECK:		Bill Lin		SHEET: 1/6	
		APPROVAL:		Bill Lin		SCALE: N/A	
						UNIT: mm	



Halogen Free

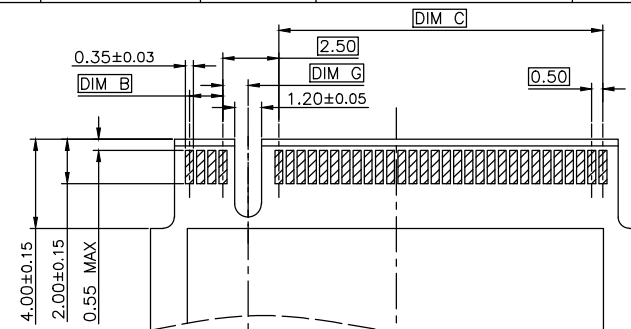
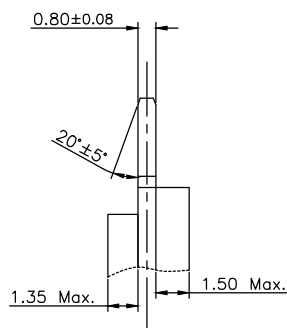
~~PB~~

Technical drawing showing a cross-section of a concrete slab with a hatched reinforcement area. The drawing includes the following dimensions and labels:

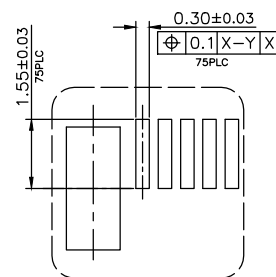
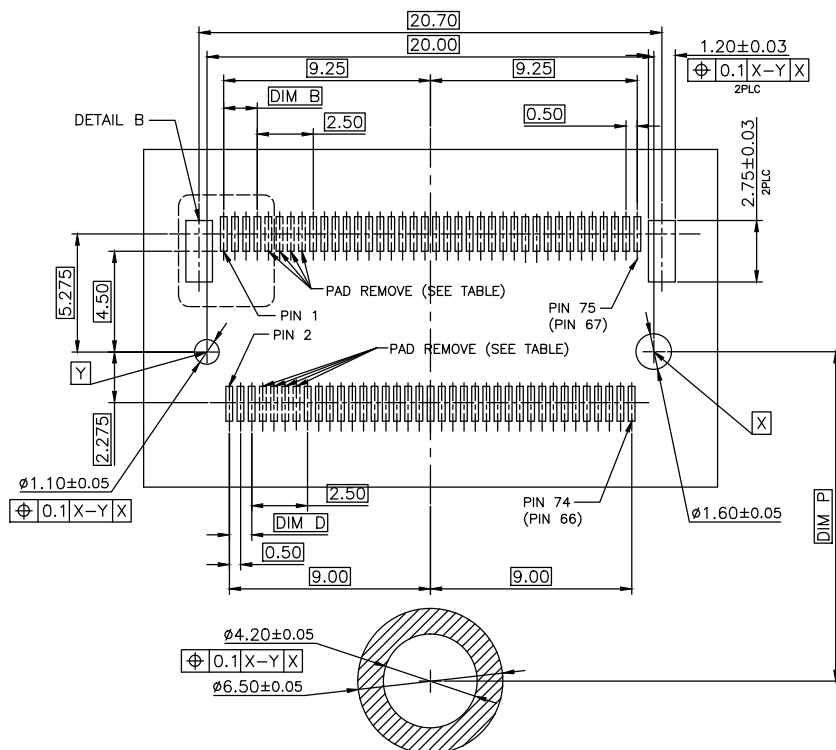
- Overall width: 22.00 ± 0.15
- Distance from left edge to start of hatched section: 19.85 ± 0.10
- Width of hatched section: 2.50
- Distance from left edge to center of hatched section: 0.35 ± 0.03
- Distance from center of hatched section to right edge: 0.55 MAX
- Distance from right edge to center of hatched section: 2.50 ± 0.15
- Distance from center of hatched section to right edge: 3.50 ± 0.15
- Labels: DIM E, DIM D, DIM F
- Vertical dimension on the left: 5.20 Min

BOTTOM SIDE

RECOMMENDED PCB LAYOUT



TOP SIDE




DETAIL B
SCALE 2:1

22110	108.25
2280	78.25
2260	58.25
2242	40.25
2230	28.25
3042	40.25
3030	28.25

						MODULE TYPE		DIM. P	
M	PIN	59-66	-6.125	14.0	2.0	14.0	1.25	1.125	1.375
L	PIN	55-62	-5.125	13.0	3.0	13.0	1.5	1.125	1.375
K	PIN	51-58	-4.125	12.0	4.0	12.0	3.5	1.125	1.375
J	PIN	47-54	-3.125	11.0	5.0	11.0	4.5	1.125	1.375
H	PIN	43-50	-2.125	10.0	6.0	10.0	5.5	1.125	1.375
G	PIN	39-46	-1.125	9.0	7.0	9.0	6.5	1.125	1.375
F	PIN	28-35	1.625	6.5	9.5	6.0	9.5	1.375	1.125
E	PIN	24-31	2.625	5.5	10.5	5.0	10.5	1.375	1.125
D	PIN	20-27	3.625	4.5	11.5	4.0	11.5	1.375	1.125
C	PIN	16-23	4.625	3.5	12.5	3.0	12.5	1.375	1.125
B	PIN	12-19	5.625	2.5	13.5	2.0	13.5	1.375	1.125
A	PIN	8-15	6.625	1.5	14.5	1.0	14.5	1.375	1.125
KEY ID	PAD REMOVED	DIM. A	DIM. B	DIM. C	DIM. D	DIM. E	DIM. F	DIM. G	DIM. H

DIM	TOL	DIM	TOL
x.	± 0.30	x.	$\pm 2^{\circ}$
.x	± 0.25	.x	$\pm 1^{\circ}$
.xx	± 0.15		



CUSTOMER DRAWING		DATE	TITLE: NGFF 4.0H_DR Logo_C DWG	
DESIGN:	Sally.Duan	01/22/16	P/N: 40-42191-067XXXHF-XX	
CHECK:	Bill Lin	01/22/16	SHEET:	2/6 
APPROVAL:	Bill Lin	01/22/16	SCALE:	N/A UNIT: mm