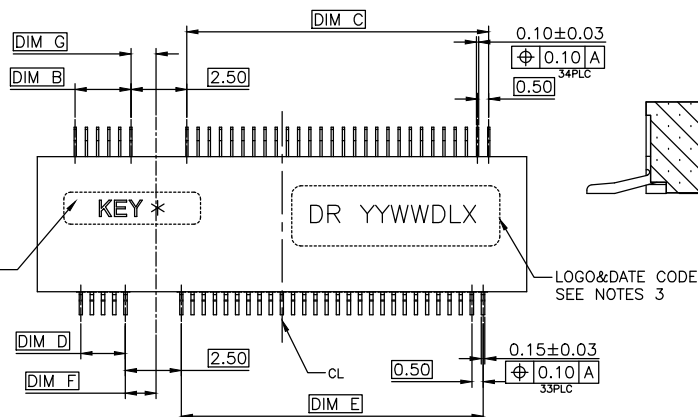


HF

Halogen Free

KEY LIST SEE
NOTES 5SECTION:A-A
SCALE:2:1

NOTES:

1. MATERIAL:

1.1 HOUSING:HIGH TEMPERATURE THERMOPLASTIC,UL94V-0,COLOR:BLACK

1.2 CONTACT:COPPER ALLOY.

1.3 SOLDER PEG:STAINLESS STEEL.

2. FINISH:

2.1 CONTACT: UNDERCOAT NICKEL 50u" MIN ALL OVER.

Au GF PLATING ON SOLDER TAIL. CONTACT AREA: SEE TABLE,

2.2 SOLDER PEG:MATTE TIN 80u" MIN. AND NICKEL 50u" MIN UNDERPLATED.

3.LOGO: DR OR DEREN, DATE CODE : YYWDLX

YY: YEAR (09: 2009)

WW: WEEK (25: THE 25TH WEEK)

D: DAY (1~7: SUNDAY~SATURDAY)

L: LINE NUMBER OF ASSEMBLY (A: LINE A)

X: D OR N (D: DAY; N: NIGHT)

4.CONNECTOR ACTUAL PIN QUANTITY IS 67, AS THE KEY TAKING OUT 8 PINS.

5.PART NUMBER DESCRIPTION:

40-42258-067XXXHF

HALOGEN CODE:

HF:HALOGEN FREE

R: EMBOSS WIDTH 44mm, SLOT BACKWARD

1: EMBOSS WIDTH 44mm, SLOT FORWARD

2: EMBOSS WIDTH 32mm, SLOT FORWARD

3: EMBOSS WIDTH 32mm, SLOT BACKWARD

PLATING CODE:1: GF

2: Au5u"

3: Au10u"

4: Au15u"

5: Au30u"

KEY TYPE:

0: KEY A

6: KEY G

1: KEY B

7: KEY H

2: KEY C

8: KEY J

3: KEY D

9: KEY K

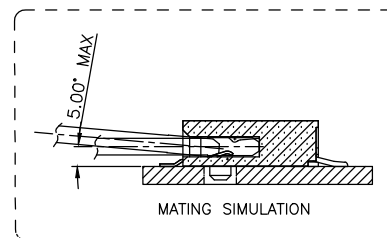
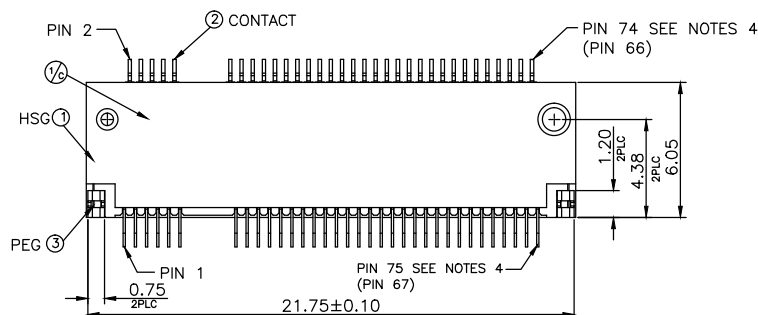
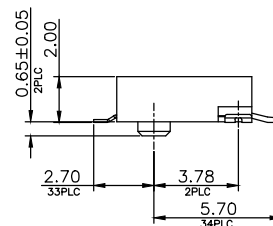
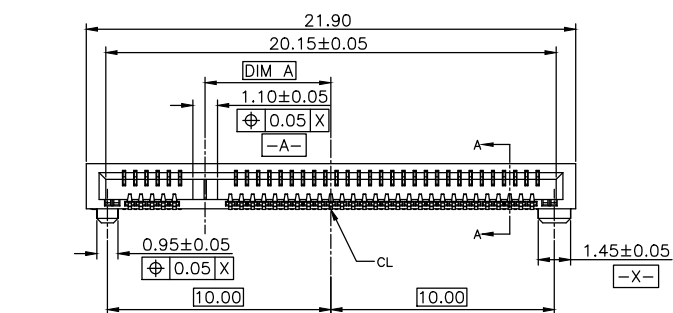
4: KEY E

A: KEY L

5: KEY F

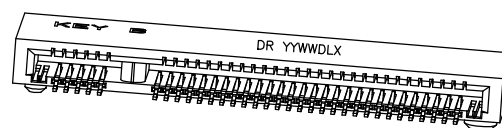
B: KEY M

PIN NUMBER CODE: 067: 67 PINS



MATING SIMULATION

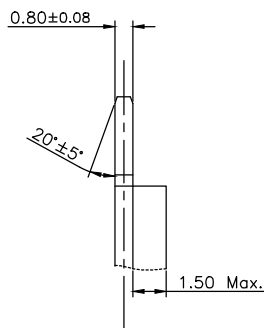
KEY M	-6.125	14.0	2.0	14.0	1.5	1.125	1.375
KEY L	-5.125	13.0	3.0	13.0	2.5	1.125	1.375
KEY K	-4.125	12.0	4.0	12.0	3.5	1.125	1.375
KEY J	-3.125	11.0	5.0	11.0	4.5	1.125	1.375
KEY H	-2.125	10.0	6.0	10.0	5.5	1.125	1.375
KEY G	-1.125	9.0	7.0	9.0	6.5	1.125	1.375
KEY F	1.625	6.5	9.5	6.0	9.5	1.375	1.125
KEY E	2.625	5.5	10.5	5.0	10.5	1.375	1.125
KEY D	3.625	4.5	11.5	4.0	11.5	1.375	1.125
KEY C	4.625	3.5	12.5	3.0	12.5	1.375	1.125
KEY B	5.625	2.5	13.5	2.0	13.5	1.375	1.125
KEY A	6.625	1.5	14.5	1.0	14.5	1.375	1.125
KEY NAME	DIM A	DIM B	DIM C	DIM D	DIM E	DIM F	DIM G



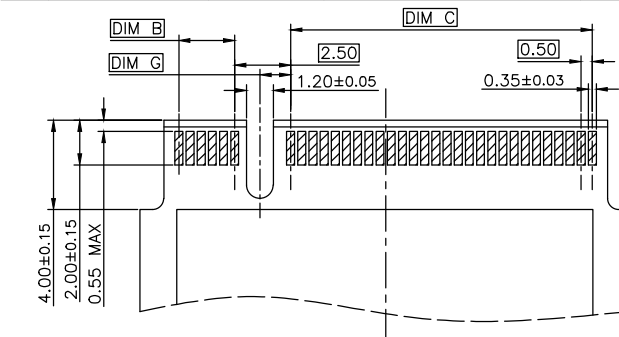
DIM	TOL	DIM	TOL
.x	±0.30	.x	±2°
.x	±0.25	.x	±1°
.xx	±0.15		

DRAW NO.		CUSTOMER DRAWING		DATE		TITLE: NGFF 2.0H_DR Logo_C DWG	
		DESIGN:	Wangtianxi	12/24'14		P/N: 40-42258-067XXXHF	
		CHECK:				SHEET: 1/6	
		APPROVAL:				SCALE: N/A UNIT: mm	
REV. D							

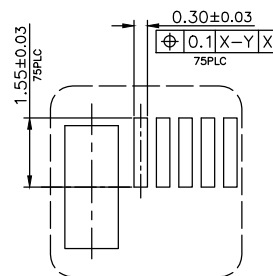
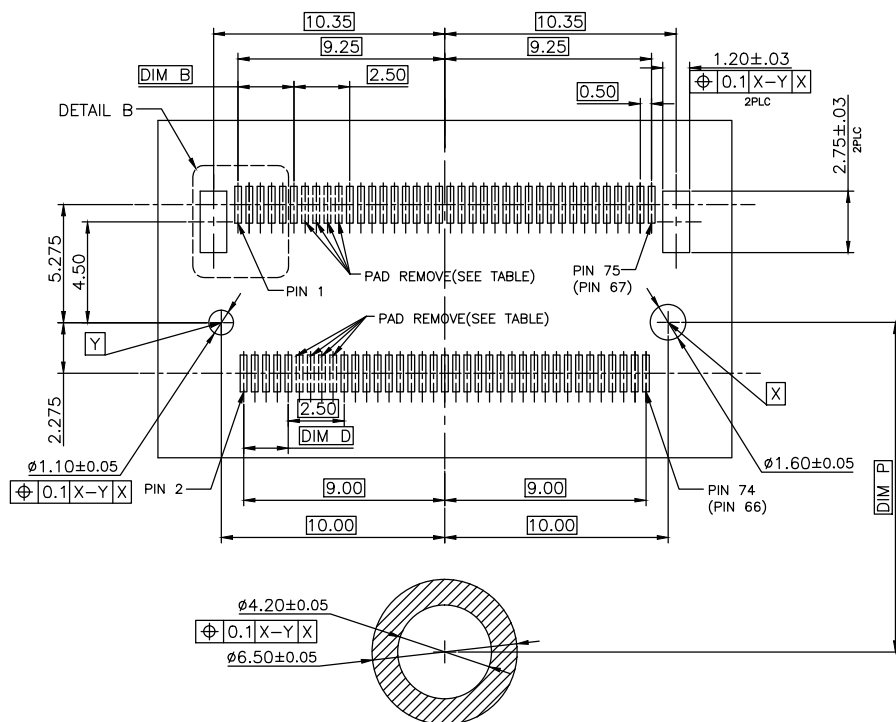
CONSHARE



BOTTOM SIDE
RECOMMENDED PCB LAYOUT



TOP SIDE



DETAIL B
SCALE 2:1

22110	108.25
2280	78.25
2260	58.25
2242	40.25
2230	28.25
3042	40.25
3030	28.25

		MODULE TYPE						DIM P
M	PIN 59-66	-6.125	14.0	2.0	14.0	1.5	1.125	1.375
L	PIN 55-62	-5.125	13.0	3.0	13.0	2.5	1.125	1.375
K	PIN 51-58	-4.125	12.0	4.0	12.0	3.5	1.125	1.375
J	PIN 47-54	-3.125	11.0	5.0	11.0	4.5	1.125	1.375
H	PIN 43-50	-2.125	10.0	6.0	10.0	5.5	1.125	1.375
G	PIN 39-46	-1.125	9.0	7.0	9.0	6.5	1.125	1.375
F	PIN 28-35	1.625	6.5	9.5	6.0	9.5	1.375	1.125
E	PIN 24-31	2.625	5.5	10.5	5.0	10.5	1.375	1.125
D	PIN 20-27	3.625	4.5	11.5	4.0	11.5	1.375	1.125
C	PIN 16-23	4.625	3.5	12.5	3.0	12.5	1.375	1.125
B	PIN 12-19	5.625	2.5	13.5	2.0	13.5	1.375	1.125
A	PIN 8-15	6.625	1.5	14.5	1.0	14.5	1.375	1.125
KEY ID	PAD REMOVED	DIM A	DIM B	DIM C	DIM D	DIM E	DIM F	DIM G

DIM	TOL	DIM	TOL
x.	± 0.30	x.	$\pm 2^{\circ}$
.x	± 0.25	.x	$\pm 1^{\circ}$
.xx	± 0.15		

					
DRAW NO.		CUSTOMER DRAWING	DATE	TITLE: NGFF 2.0H_DR Logo_C DWG	
		DESIGN: Wangtiansi	12/24'14	P/N: 40-42258-067XXXHF	
		CHECK:		SHEET: 2/6 	
REV.	D	APPROVAL:		SCALE: N/A UNIT: mm	