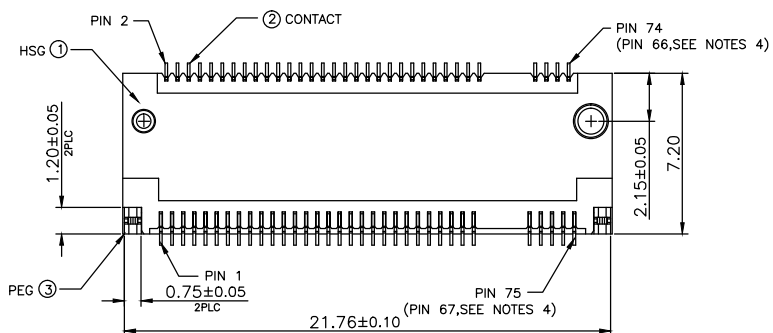
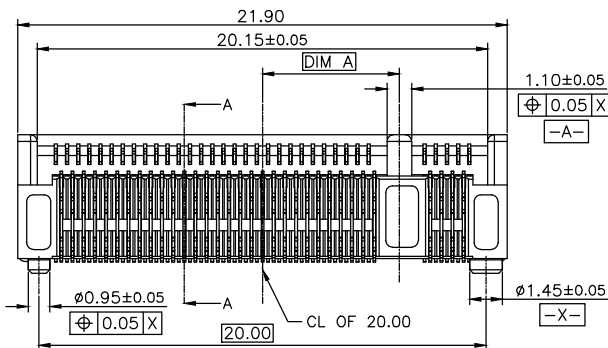
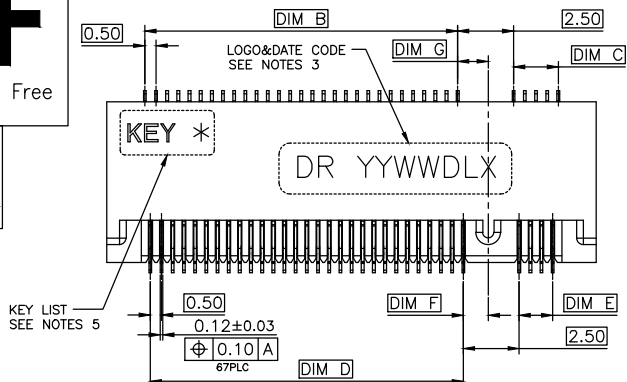
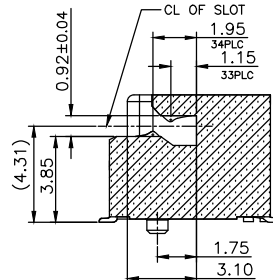




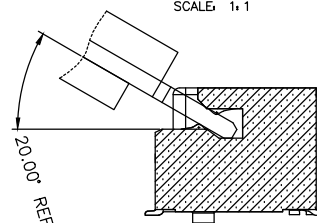
KEY LIST —  
SEE NOTES 5



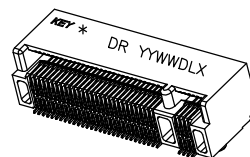
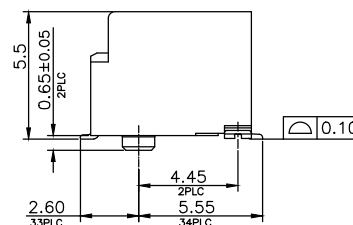
|          |        |       |       |       |      |       |       |
|----------|--------|-------|-------|-------|------|-------|-------|
| KEY M    | -6.125 | 14.0  | 2.0   | 14.0  | 1.5  | 1.125 | 1.375 |
| KEY L    | -5.125 | 13.0  | 3.0   | 13.0  | 2.5  | 1.125 | 1.375 |
| KEY K    | -4.125 | 12.0  | 4.0   | 12.0  | 3.5  | 1.125 | 1.375 |
| KEY J    | -3.125 | 11.0  | 5.0   | 11.0  | 4.5  | 1.125 | 1.375 |
| KEY H    | -2.125 | 10.0  | 6.0   | 10.0  | 5.5  | 1.125 | 1.375 |
| KEY I    | -1.125 | 9.0   | 7.0   | 9.0   | 6.5  | 1.125 | 1.375 |
| KEY F    | 1.625  | 6.5   | 9.5   | 6.0   | 9.5  | 1.375 | 1.125 |
| KEY E    | 2.625  | 5.5   | 10.5  | 5.0   | 10.5 | 1.375 | 1.125 |
| KEY D    | 3.625  | 4.5   | 11.5  | 4.0   | 11.5 | 1.375 | 1.125 |
| KEY C    | 4.625  | 3.5   | 12.5  | 3.0   | 12.5 | 1.375 | 1.125 |
| KEY B    | 5.625  | 2.5   | 13.5  | 2.0   | 13.5 | 1.375 | 1.125 |
| KEY A    | 6.625  | 1.5   | 14.5  | 1.0   | 14.5 | 1.375 | 1.125 |
| KEY NAME | DIM A  | DIM B | DIM C | DIM D | FMS  | DIM F | DIM G |



SECTION: A-A  
SCALE: 1/1



### MATING ANGLE ILLUSTRATION



3D VIEW  
SCALE: 1:2

NOTES:

1. MATERIAL:  
1.1 HOUSING: HIGH TEMPERATURE THERMOPLASTIC, UL94V-0, COLOR: BLACK  
1.2 CONTACT: COPPER ALLOY.  
1.3 SOLDER PEG: STAINLESS STEEL.  
2. FINISH:  
2.1 CONTACT: UNDERPLATING NICKEL 50u" MIN OVERALL, GF PLATING  
ON SOLDER AREA. CONTACT AREA: SEE TABLE,  
2.2 SOLDER PEG: MATTE TIN 80u" MIN. AND NICKEL 50u" MIN  
UNDER PLATED.  
LOGO & DATE CODE: LOGO: DR OR DEREN, DATE CODE: YYWWDLX  
YY: YEAR (09: 2009)  
WW: WEEK (25: THE 25TH WEEK)  
D: DAY (1~7: SUNDAY~SATURDAY)  
L: LINE NUMBER OF ASSEMBLY  
X: D OR N, D: DAY, N: NIGHT  
CONNECTOR ACTUAL PIN QUANTITY IS 67, AS THE KEY TAKING OUT 8 PINS.  
PART NUMBER DESCRIPTION:  
40-42289-067XXXHF-X

HALOGEN CODE:  
HF:HALOGEN FREE




PACKING CODE:  
R: EMBOSS WIDTHE 44mm, SLOT BACKWARD  
1: EMBOSS WIDTHE 44mm, SLOT FORWARD  
2: EMBOSS WIDTHE 32mm, SLOT FORWARD  
3: EMBOSS WIDTHE 32mm, SLOT BACKWARD

PLATING CODE: 1: GF 2: Au5u"  
3: Au10u"  
5: Au30u"

KEY TYPE:

- |          |          |
|----------|----------|
| 0: KEY A | 6: KEY G |
| 1: KEY B | 7: KEY H |
| 2: KEY C | 8: KEY J |
| 3: KEY D | 9: KEY K |
| 4: KEY E | A: KEY L |
| 5: KEY F | B: KEY M |

PIN NUMBER CODE:  
067: 67 PINS

|           |           |   |          |        |   |
|-----------|-----------|---|----------|--------|---|
|           |           |  |          |        |   |
|           |           | CUSTOMER DRAWING  |          | DATE   | TITLE: NGFF 5.50H_ASSEMBLY<br>DR_Logo_C DWG   |
| DRAW NO.  | DESIGN:   | Sally.Duan  | 09/05/14 | P/N:   | 40-42289-067XXXHF-X   |
| T-14-0262 | CHECK:    | Bill.Lin  | 09/05/14 | SHEET: | 1/6   |
| REV.      | APPROVAL: | Bill.Lin  | 09/05/14 | SCALE: | N/A UNIT: mm  |
| X1        |           |   |          |        |   |



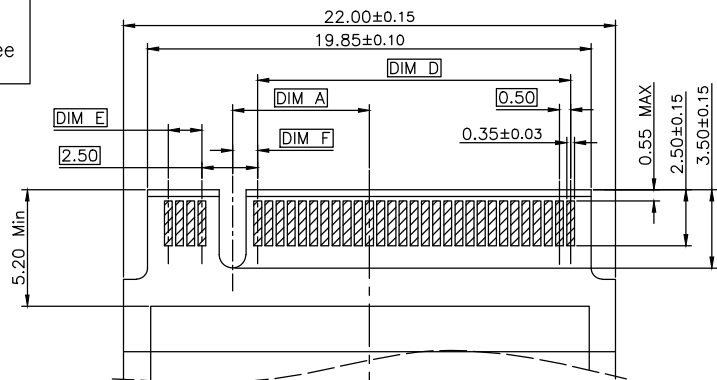
HF

Halogen Free

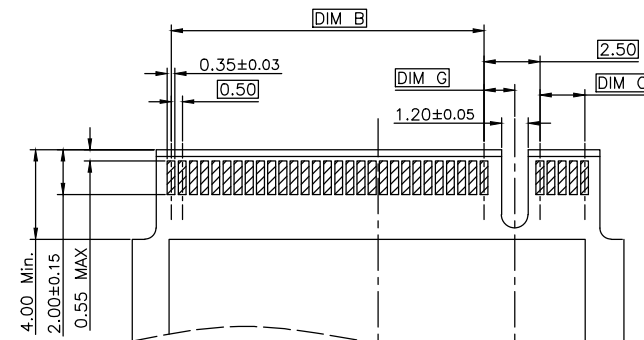
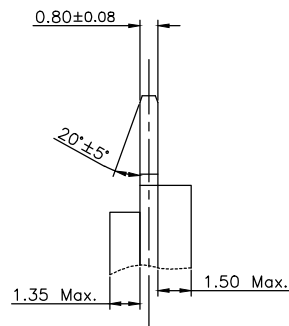


## PLUG PCB

| REV. | ECN NO. | LOCATION | DESCRIPTION     | DATE     | DESIGN     |
|------|---------|----------|-----------------|----------|------------|
| X1   |         |          | INITIAL RELEASE | 09/05'14 | Sally.Duan |

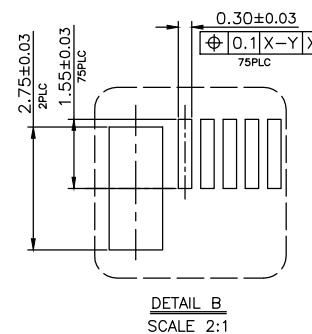
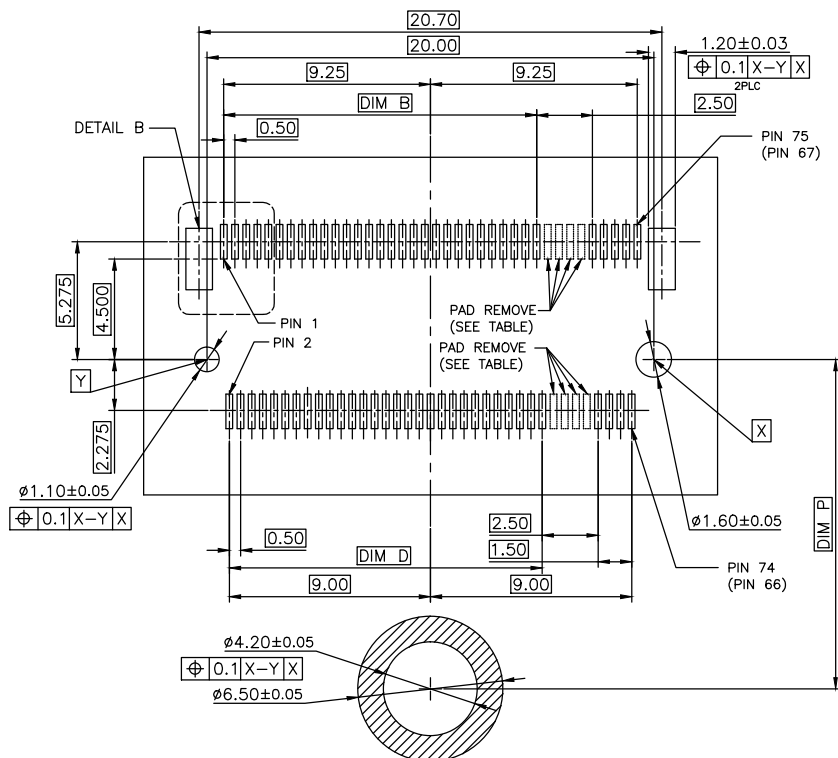


BOTTOM SIDE



TOP SIDE

## RECOMMENDED PCB LAYOUT



| MODU  | TYPE   | DIM P |
|-------|--------|-------|
| 22110 | 108.25 |       |
| 2280  | 78.25  |       |
| 2260  | 58.25  |       |
| 2242  | 40.25  |       |
| 2230  | 28.25  |       |
| 3042  | 40.25  |       |
| 3030  | 28.25  |       |

|        |             |       |        |       |       |       |       |       |       |
|--------|-------------|-------|--------|-------|-------|-------|-------|-------|-------|
| L      | PIN         | 59-66 | -6.125 | 14.0  | 2.0   | 14.0  | 1.5   | 1.125 | 1.375 |
| M      | PIN         | 55-62 | -5.125 | 13.0  | 3.0   | 13.0  | 2.5   | 1.125 | 1.375 |
| K      | PIN         | 51-58 | -4.125 | 12.0  | 4.0   | 12.0  | 3.5   | 1.125 | 1.375 |
| J      | PIN         | 47-54 | -3.125 | 11.0  | 5.0   | 11.0  | 4.5   | 1.125 | 1.375 |
| H      | PIN         | 43-50 | -2.125 | 10.0  | 6.0   | 10.0  | 5.5   | 1.125 | 1.375 |
| G      | PIN         | 39-46 | -1.125 | 9.0   | 7.0   | 9.0   | 6.5   | 1.125 | 1.375 |
| F      | PIN         | 28-35 | 1.625  | 6.5   | 9.5   | 6.0   | 9.5   | 1.375 | 1.125 |
| E      | PIN         | 24-31 | 2.625  | 5.5   | 10.5  | 5.0   | 10.5  | 1.375 | 1.125 |
| D      | PIN         | 20-27 | 3.625  | 4.5   | 11.5  | 4.0   | 11.5  | 1.375 | 1.125 |
| C      | PIN         | 16-23 | 4.625  | 3.5   | 12.5  | 3.0   | 12.5  | 1.375 | 1.125 |
| B      | PIN         | 12-19 | 5.625  | 2.5   | 13.5  | 2.0   | 13.5  | 1.375 | 1.125 |
| A      | PIN         | 8-15  | 6.625  | 1.5   | 14.5  | 1.0   | 14.5  | 1.375 | 1.125 |
| KEY ID | PAD REMOVED | DIM A | DIM B  | DIM C | DIM D | DIM E | DIM F | DIM G |       |

| DIM | TOL   | DIM | TOL |
|-----|-------|-----|-----|
| .x  | ±0.30 | .x  | ±2° |
| .x  | ±0.25 | .x  | ±1° |
| .xx | ±0.15 |     |     |

| CUSTOMER DRAWING   | DATE     | TITLE:                            |
|--------------------|----------|-----------------------------------|
| DESIGN: Sally.Duan | 09/05'14 | NGFF 5.50H_ASSEMBLY DR Logo_C DWG |
| CHECK: Bill Lin    | 09/05'14 | P/N: 40-42289-067XXXHF-X          |
| APPROVAL: Bill Lin | 09/05'14 | SHEET: 2/6                        |
| REV. X1            |          | SCALE: N/A UNIT: mm               |

CONSHARE