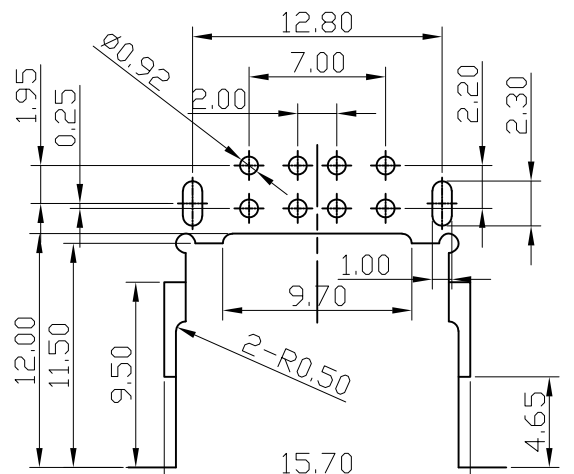
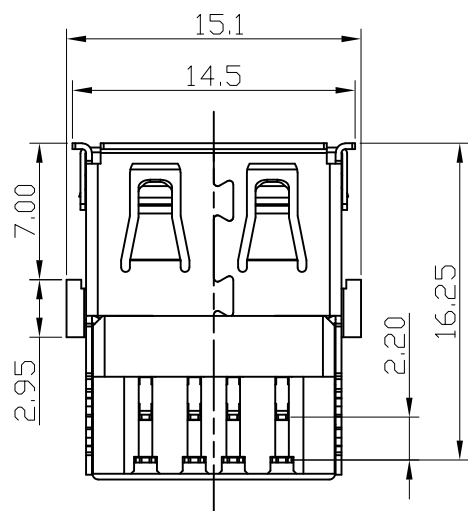


NOTES:

1. MATERIAL:
HOUSING: LCP WITH 30% GF, UL 94V-0, COLOR: BLACK.
CONTACT: PHOSPHOR BRONZE.
SHELL: BRASS.
SPRING: SUS 304.
2. FINISH:
CONTACTS: 0.127um[5u"] MIN. GOLD PLATED ON CONTACT AREA,
2.54um[100u"] MIN. MATTE-TIN PLATED ON SOLDER TAIL,
1.27um[50u"] MIN. NICKEL UNDERPLATED OVER ALL.
SHELL: 2.03um[80u"] MIN. NICKEL PLATED.
3. RECOMMENDED PCB THICKNESS: 1.2mm.



RECOMMEND PCB LAYOUT(THICKNESS 1.2mm)
(COMPONENT SIDE) TOLERANCE±0.05

BZ06C02306902	G/F
BZ06C02306901	5u"
PART NUMBER	GOLD PLATED

TOLERANCES UNLESS OTHERWISE SPECIFIED: 0 PLC ± 1 PLC ±0.30 2 PLC ±0.25 3 PLC ±0.15 ANGLES ±3°	DWN	BIN 07-APR-2013			
	CHK				
MATERIAL SEE NOTE	APVD		USB A FEMALE R/A TYPE LOW PROFILE.		
	PRODUCT SPEC				
FINISH SEE NOTE	QUALIFICATION TEST REPORT	LOC DW	SIZE A4	DRAWING NO C023069	REV A2
	WEIGHT	SCALE --	SHEET 1 OF 2		

A2	#变更修订图#	ECN13013	bin WEN 2013	07-APR-2013
A1	2.40+/-0.1 to 2.2+0.05/-0.10	ECN11010	KAI WEN 2011	29-JUN-2011
A0	FIRST RELEASED	--	KAI WEN 2009	17-APR-2009
LTR	REVISION RECORD	ECN	DWN CHK	DATE